

Ka mārō te aho tapu, ka tau te korowai:

Ko ngā kitenga reo Māori mai i Te Kupenga 2013



Manatārua a te Karauna ©

E raihanatia ana tēnei tuhinga i raro i te raihana [Creative Commons Attribution 3.0 New Zealand](#). E wātea ana koe ki te tārua, te tohatoha, te urutau hoki i tēnei tuhinga, engari me whakaatu e koe nā Tatauranga Aotearoa ngā mahi, ā, me te ū ki ētahi atu here raihana. Me mōhio anō koe, kua rawa koe e whakamahi i ngā tohu, moko rānei a tētahi tari kāwanatanga, a te kāwanatanga rānei mēnā ka takahia ngā whakaritenga o te [Flags, Emblems, and Names Protection Act 1981](#). Me whakamahi e koe ko ngā kupu 'Statistics New Zealand' i roto i tō kōrero, kua te tohu o Tatauranga Aotearoa.

Ko te taunaha

Ahakoia i āta mahi, i urupū hoki i roto i ngā mahi tukatuka, tātari me te tango raraunga me ngā kōrero i roto i tēnei whakaputanga, kāore a Tatauranga Aotearoa i te whakapūmau i ngā kōrero he hapa-kore, ā, nō reira ehara i a ia te kawenga mēnā ka pā he wharanga, he ngaromanga rānei nā te whakamahinga o ngā kōrero i roto i tēnei whakaputanga, ahakoia hāngai, tītaha rānei.

Kōrero tohutoro

Tatauranga Aotearoa (2014). *Ka mārō te aho tapu, ka tau te korowai: Ko ngā kitenga reo Māori mai i Te Kupenga 2013*. E wātea ana i www.stats.govt.nz.

ISBN 978-0-478-42922-0 (ipurangi, Ingarihi)

ISBN 978-0-478-42923-7 (ipurangi, te reo Māori)

He mea whakaputa i te marama o Whiringa-ā-nuku 2014 e

Statistics New Zealand

Tatauranga Aotearoa

Te Whanganui-a-Tara, Aotearoa

Whakapā

Statistics New Zealand Information Centre: info@stats.govt.nz

Waea koreutu: 0508 525 525

Waea tāwāhi: +64 4 931 4610

www.stats.govt.nz



Ko ngā ihirangi

Rārangi ripanga me ngā kauwhata	4
1 Ko te kaupapa me ngā hua matua	5
Ko te kaupapa.....	5
Ko ngā hua matua	5
2 He whakamāramatanga ki te reo Māori	7
Ko te whakarauora i te reo Māori	7
3 Ko ngā hua reo Māori taumata teitei	8
Ko te matataunga kōrero	8
Ko te whakamahinga i roto i te kāinga	8
Ko te whakamahinga i waho o te kāinga.....	8
Ko te reo Māori hei reo tuatahi	8
Ko ētahi atu pūkenga reo taketake.....	8
4 Ko ngā whanaungatanga i waenga i te matataunga reo Māori me tōna whakamahinga	10
He whanaungatanga tō te matataunga kōrero teitei ki te whakamahinga nui ake o te reo	10
reo	10
5 Ko ētahi atu āhutatanga e pā ana ki te matataunga reo Māori me tōna whakamahinga	14
Ko ngā āhutatanga matua e toru o te matataunga reo Māori me tōna whakamahinga	14
He tino hono o te reo Māori ki te ahurea me te tuakiri	15
Ka pā te matataunga kōrero i te reo Māori ki te mātauranga.....	18
He hāngai te whakamahinga o te reo i te kāinga ki ngā āhutatanga o te whānau	19
6 Ko ngā kitenga o Te Kupenga i roto i te horopaki whānui ake	22
He nui ake te aronui ki te whai i te ao Māori	22
Ko te whai wāhi ki te mātauranga reo Māori	22
7 Ko te whakaotinga	24
Ko ngā tohutoro	25
Āpitianga 1: Tikanga Mahi	26
Raraunga mai i Te Kupenga.....	26
Whakamahia ai te "logistic regression" hei tikanga tātari	26
He taura o te reo Māori.....	27
Te whakamārama i ngā ōwehenga tūwehe	27
Āpitianga 2: Ngā otinga o te "logistic regression"	28



Rārangi ripanga me ngā kauwhata

Rārangi ripanga

1 Ko te matataunga ki te reo Māori	9
2 Ko te nui o te reo Māori e kōrerohia i te kāinga	12
3 Ko te nui o te reo Māori e kōrerohia i waho o te kāinga.....	13
Ripanga āpitianga 1 Te tūponotanga o te whakamahi, te kōrero rānei i te reo Māori.....	28

Rārangi kauwhata

1 Ko te nui o te reo Māori e kōrerohia ana i te kāinga, i waho o te kāinga, mā te taumata o te kaha	11
2 Ko te nui o te reo Māori e kōrerohia ana i te kāinga, i waho o te kāinga, mā te reo tuatahi	15
3 Ko te kaha o te kōrero i te reo Māori, mā te taumata o te kaha me te hiranga o te whai wāhi ki te ao Māori.....	16
4 Ko te kaha o te kōrero o te reo Māori, mā te whai wāhi ki ngā mahinga ahurea	17
5 Ko te kaha o te kōrero i te reo Māori, mā te taumata o te kaha me te urunga ki ngā kura Māori	19
6 Ko te nui o te reo Māori e kōrerohia ana i te kāinga, mā ngā tāngata e noho ana i te kāinga	20
7 Ko te nui o te reo Māori e kōrerohia ana i te kāinga, mā te nui o te whānau	21
8 Ko te ōwehenga o ngā uri Māori he kotahi te iwi, neke atu rānei	22

1 Ko te kaupapa me ngā hua matua

Nau mai, haere mai ki *Ka mārō te aho tapu, ka tau te korowai: Ko ngā kitenga reo Māori mai i Te Kupenga 2013*.

E whakaritea ana te taitara o tēnei pūrongo i te reo ki te aho tuatahi o te korowai. Mēnā kei te kaha te aho matua, ka matatū tonu te korowai me ngā kāwai kua whiria.

Ko te reo te mauri o te mana Māori.

Ko te kaupapa

E hōpara ana a *Ka mārō te aho tapu, ka tau te korowai: Ko ngā kitenga reo Māori mai i Te Kupenga 2013* i ngā āhuratanga e pā ana ki te matataunga o te reo Māori me tōna whakamahinga i roto, i waho hoki o te kāinga i Aotearoa. Otirā, he titiro mēnā kei te kaha te whanaungatanga i waenga i ngā wāhanga matua o te haumitanga ki te whakarauora i te reo Māori – pēnei i te whakamahinga i te kāinga, i te mātauranga reo Māori, me te whānau.

He taonga te reo Māori. I roto i ngā tau 30 kua pahure, kua tino kitea me whai tautoko. Kua whakapau rawa ngā kāwanatanga o ngā tau ki ngā kaupapa mātauranga, hapori, whānau hoki hei whakarauora i tēnei taonga.

Ko tā Te Kupenga he tuku i tēnei whai wāhitanga tuatahi ki te whakaata i ngā kōrero mō te matataunga o te reo Māori e pā ana ki te whakamahinga, mātauranga, me ētahi atu āhuratanga o te ahurea Māori.

Ka tautoko te pūrongo i ngā matapaki onāiane e pā ana ki te rautaki anamata mō te whakarauora i te reo Māori. He whakarato raraunga hei tautoko i ngā whakapono. Engari he tohu i te pūmanawa o Te Kupenga ki te tautoko i tētahi aronga whai taunakitanga ki te whanaketanga Māori.

Ko ngā hua matua

E hāngai ana te tino mōhio ki te reo Māori ki te whakamahinga nui o te reo.

- Tata ki te 85 ōrau o ngā Māori he pai rawa atu, he pai, he āhua pai rānei te kōrero i te reo Māori he kōrero Māori i ētahi wā i te kāinga. Hāunga te 58 ōrau o rātau he iti noa te reo (kāore i te pai tō rātau reo).
- Ko ngā Māori he pai rawa atu, he pai, he āhua pai rānei te kōrero i te reo Māori, ko te tikanga ka nui ake te whakamahi i te reo i waho i te kāinga tēnā i roto.

He kaha te whanaungatanga i waenga i te reo Māori me ētahi atu āhuratanga o te ahurea.

- O ngā Māori 38,000 ko te reo Māori tō rātau reo tuatahi, 52 ōrau he pai rawa atu, he pai rānei tō rātau reo. Hāunga te 7 ōrau o ngā pakeke Māori ko te reo Ingarihi tō rātau reo tuatahi he pai rawa atu, he pai rānei tō rātau reo Māori.
- 62 ōrau o ngā Māori e mōhio ana ki ngā āhuratanga katoa o tā rātau pepeha i kōrero Māori i ētahi wā i roto i te kāinga. Hāunga te 16 ōrau anake o rātau he iti ake tō rātau mōhio ki tā rātau pepeha he kōrero Māori i ētahi wā i te kāinga.
- He haurua o ngā Māori 124,000 i kī he mea tino nui te whai wāhi ki tō rātau ao Māori he pai rawa atu, he pai, he āhua pai rānei tō rātau reo Māori.

He pānga tō ngā āhuatanga mātauranga ki te matataunga o te reo Māori.

- He haurua o ngā Māori 16,500 i urunga ki te kōhanga reo me te kura kaupapa he pai rawa atu, he pai rānei tō rātau reo Māori. Otirā, 92 ōrau he mōhio nui atu i ētahi kupu noa iho, ētahi kīanga rānei.
- 19 ōrau o ngā Māori whai tohu paetahi, teitei ake rānei he pai rawa atu, he pai rānei ō rātau reo Māori.

He kaha te whanaungatanga i waenga i te whakamahinga o te reo Māori i te kāinga me te whānau.

- 46 ōrau o ngā Māori whai tamariki i roto i tō rātau kāinga he kōrero Māori i ētahi wā i roto i te kāinga, ā, he 23 ōrau te whakataurite ki a rātau kāore he tamariki i roto i te kāinga.
- 78 ōrau o rātau kei te rēhita ā rātau tamariki i te kura kaupapa he kōrero Māori i ētahi wā i te itinga rawa i te kāinga, tae atu ki te 35 ōrau he ōrite te kōrerohia ki tētahi atu reo, nui atu rānei.

2 He whakamāramatanga ki te reo Māori

"He whakaata te reo i te ngākau, te wairua, te tikanga o te iwi..."

Tākuta Kathy Dewes (2012)

He tino take tō te reo ki te kaupapa ahurea, ā, he āhuatanga nui ki te tuakiri ahurea. E whakatinana ana te reo i ngā whakapono me ngā mōhiotanga o te ahurea, he whakaata i te tirohanga ahurea, me te aha me te kawē i ngā uara me ngā tikanga mai i tētahi whakatipuranga ki tētahi atu.

Ko te reo Māori te reo taketake o Aotearoa. Koinei te reo tuku iho o ngā tāngata whenua ka mutu he taonga e tiakina ana i raro i Te Tiriti o Waitangi. He tino take nō te ahurea Māori, ā, he mea nui i roto i ngā whakahaere ahurea, tuakiri hoki (Te Manatū Whakahiato Ora, 2010).

Ko te whakarauora i te reo Māori

Mai i te taenga mai o Tauwiwi ki Aotearoa, he nui ngā rerekētanga ki te reo Māori. Koinei te reo matua mō te katoa, kātahi ka heke haere tōna whakamahinga me te pōhēhē o te tokomaha ka mate te reo. Nā ngā mānukanukatanga mō te reo ka puta ngā kaupapa maha hei whakarauora i te reo kia pūmau ai, kia ora ai te reo Māori.

Nā te iwi Māori tonu ngā kaupapa whakarauora tuatahi. Kei roto i ēnei kaupapa ko te rā o te reo Māori (ko te wiki o te reo Māori ināianei) i te tau 1975 me ngā kaupapa whakarauora reo Māori i te tīmatanga o ngā tau 1980 pēnei i Te Ataarangi, Te Kōhanga Reo me Te Kura Kaupapa Māori.

I tāpaetia te Kerēme Reo Māori Wai 11 i te tau 1985 ki Te Rōpū Whakamana i te Tiriti o Waitangi me te tono kia tiakina, kia whakamanahia te reo Māori. Ko te whakatau a te taraipiunara he taonga te reo e tiakina ana i raro i te Tiriti o Waitangi, ā, e herea ana te kāwanatanga ki te tiaki me te tautoko i te reo.

Nā te Ture o Te Reo Māori 1987 i whakapuakina te reo Māori hei reo tūturu nō Aotearoa. I whakatūhia anō ko Te Taura Whiri i te Reo Māori hei whakatairanga i te reo. I taua tau anō, i tīmata te whakapāho a ngā reo irirangi Māori. I whakatūhia te Pouaka Whakaata Māori i te tau 2004.

Mai rāno i te tau 1997 he whai rautaki reo te kāwanatanga e ū ana ki te whakakaha i te mōhiotanga, i te whakamahinga, me te mana o te reo Māori. I te Haratua 2014 i nekehia e te rautaki hou te aronga o te whakarauoratanga mai i te kāwanatanga ki te tangata whenua me te aro ki te whakapikitanga o te whakamahinga o te reo i roto i te whānau me ngā hapori Māori (Te Puni Kōkiri 2014).

3 Ko ngā hua reo Māori taumata teitei

E whakarāpopoto ana tēnei wāhanga i ngā otinga taumata teitei mō te reo Māori mai i te whakaputanga kōrero o Te Kupenga 2013 i te Haratua 2014 (Tatauranga Aotearoa, 2014). I roto i taua whakaputanga ko ngā kōrero mō te reo tuatahi, te matataunga, me te whakamahinga o te reo Māori i roto me waho o te kāinga, mā te taipakeke, te ira tangata, me te rohe.

[Pānuhia Te Kupenga 2013](#) mō ētahi atu kōrero taipitopito.

Ko te matataunga kōrero

I te tau 2013 tata ki te 257,500 (55 ōrau) ngā pakeke Māori i kī he mōhio rātau nui ake i ētahi kupu noa iho, ētahi kīanga reo Māori. Otirā, 50,000 (11 ōrau) he pai rawa atu, he pai rānei te kōrero i te reo, 12 ōrau he āhua pai, ā, he 32 ōrau he mōhio ki ētahi kōrero māmā i roto i te reo. Ko te toenga 45 ōrau he mōhio ki te kōrero i ētahi kupu noa iho, ētahi kīanga anake.

Ko te whakamahinga i roto i te kāinga

I te tau 2013, o te hunga he mōhio nui ake i ētahi kupu noa iho, ētahi kīanga reo Māori, 64 ōrau i kī he kōrero Māori i ētahi wā i te kāinga. Pērā anō i te tau 2001, i te nuinga o te wā he kōrero Māori ki ngā tamariki i te kāinga, otirā ngā taitamariki kōhungahunga, kura tuatahi hoki. Neke atu i te 80 ōrau o ngā pakeke Māori e noho ana me ngā tamariki kōhungahunga i kōrero Māori i ētahi wā ki a rātau, tae atu ki te 18 ōrau o rātau he ōrite te kōrerohia o te reo ki tētahi atu reo, nui atu rānei.

Ko te whakamahinga i waho o te kāinga

O te hunga he mōhio nui ake i ētahi kupu noa iho, ētahi kīanga reo Māori, 67 ōrau i kī he whakamahi i te reo Māori i waho o te kāinga. Ko te kōrero i te reo i waho i te kāinga i tino mahia i te wā ka haere ki tētahi karapu, rōpū rānei, te āwhina i te kura, me te haere ki ngā hui. Engari, i waenga i te tau 2001 me te tau 2013 ka iti haere te wāhanga o ngā Māori he reo Māori te katoa, te nuinga rānei o te reo kōrero i waho o te kāinga.

Ko te reo Māori hei reo tuatahi

Ko te reo Māori te reo tuatahi (arā, i tō te reo mai i te tamarikitanga me te mau haere tonu) mō ngā pakeke Māori 38,000, arā, he 8 ōrau.

Ko ētahi atu pūkenga reo taketake

Tāpiri atu ki ngā matataunga kōrero, i kohia anō e Te Kupenga ngā kōrero mō te whakarongo, te pānuī, me te tuhituhi i te reo Māori. He ōrite tonu te tauira matataunga puta noa i ngā pūkenga e whā.

Ko te whakarongo te pūkenga e mau whānuitia o ngā pūkenga katoa – 62 ōrau o ngā pakeke Māori i kī he mōhio nui ake i ētahi kupu noa iho, ētahi kīanga reo Māori rānei. Pērā anō i te matataunga kōrero, he tino matatau ake te hunga pakeke ake – e 26 ōrau o te hunga 55+ ngā tau he pai rawa atu, he pai rānei te mōhio ki te kōrero Māori. I ētahi atu o ngā rōpū taipakeke he 12 ki te 17 ōrau. He nui ake te mōhio o ngā wāhine, arā, he pai rawa atu, he pai rānei ki te kōrero Māori – he 19 ōrau ki tēnei taumata, ā, he 13 ōrau tō ngā tāne.

Ahako ko te tuhituhi i roto i te reo te pūkenga kāore i tino pūrongohia, i piki te ōwehetanga o ngā Māori i kī ka taea te tuhi Māori mai i te tau 2001 ki te 2013. Ko te

nuinga o te pikitanga i ahu kē mai i ērā i te taumata 'kāore i te tino pai'. O te hunga Māori he pai rawa atu, he pai rānei te tuhi, ko te hunga taipakeke 55+ i tino kaha (17 ōrau), i heke mai i te 28 ōrau i te tau 2001. Ko te matataunga tuhituhi reo pai rawa atu, pai rānei i piki i roto i te hunga 25–44 ngā tau. Ko te nuinga o te pikitanga i ngā tau 25–34, he pikitanga o te 5 ōrau i te tau 2001 ki te 11 ōrau i te tau 2013.

Ripanga 1

Ko te matataunga ki te reo Māori

Mā te pūkenga reo

2001 me te 2013

Ko te matataunga	Ko ngā pūkenga reo					
	Whakarongo	Pānui	Tuhituhi	Whakarongo	Pānui	Tuhituhi
	2001			2013		
	Ōrau (%)					
He pai rawa atu	8.9	6.8	6.0	8.1	7.4	5.8
He pai	6.4	5.8	5.0	8.0	7.6	5.9
He āhua pai	18.4	15.9	12.7	17.0	15.9	11.8
Kāore i te tino pai	25.4	24.5	20.4	29.2	26.8	27.2
Kāore i tua atu i ētahi kupu noa iho, ētahi kīanga rānei	40.9	47.0	55.9	37.7	42.3	49.4

4 Ko ngā whanaungatanga i waenga i te matataunga reo Māori me tōna whakamahinga

E tiroiro ana tēnei wāhanga ki ngā whanaungatanga i waenga i te matatau ki te reo Māori me te nui o te whakamahinga o te reo i te kāinga me ētahi atu wāhi i waho o te kāinga.

He tuku kōrero hou a Te Kupenga e hono ana i te matataunga o te reo ki tōna whakamahinga. He mea nui te whakamahinga o te reo Māori i ngā wāhi maha mō te noho matatau i te reo.

Ka pā ngā tauranga katoa i tēnei pūrongo ki te katoa o te taupori o Aotearoa i kī rātau he mātāwaka Māori rātau he 15 tau, neke atu rānei te pakeke. Kei roto hoki i ngā tauranga mō te whakamahinga o te reo Māori i roto me waho o te kāinga ko ngā Māori 213,000 i kī he ruarua noa iho ngā kupu, rerenga kōrero reo Māori e mōhio ana rātau, ā, ka whakarōpūhia rātau he kore whakamahi i te reo.

He whanaungatanga tō te matataunga kōrero teitei ki te whakamahinga nui ake o te reo

Ko ngā Māori he pai rawa atu, he pai, he āhua pai rānei te kōrero i te reo Māori (106,500 tāngata), he nui ake te whakamahinga o te reo i te kāinga ki ērā kāore i tino pai te kōrero i te reo (151,000 tāngata). Tata ki te 85 ōrau o ngā Māori i ngā rōpū matatau teitei ake e toru he kōrero Māori i ētahi wā i te itinga rawa i te kāinga, ā, he 58 ōrau anake o te hunga whai reo māmā noa iho (kāore e tino pai te reo).

Ka piki te nui o te whakamahinga o te reo Māori i te kāinga me te matataunga. He nui ake te whakamahinga ake o te reo e te hunga he pai rawa atu te reo kōrero. O te hunga he pai rawa atu te reo, 45 ōrau o rātau he whakamahi ōrite i te reo me tētahi atu reo, nui ake rānei ki tētahi i roto i tō rātau kāinga, tae atu ki te 27 ōrau he kōrero anake i te reo, i te nuinga o te wā rānei.

O ngā Māori he pai te reo Māori (26,500), 35 ōrau he ōrite te kōrero, nui ake rānei i tētahi atu reo, tae atu ki te 8 ōrau he kōrero i ngā wā katoa, i te nuinga o te wā rānei.

Ahako te matatau, ko te tikanga e kōrerohia ana te reo Māori i te kāinga i ētahi wā.

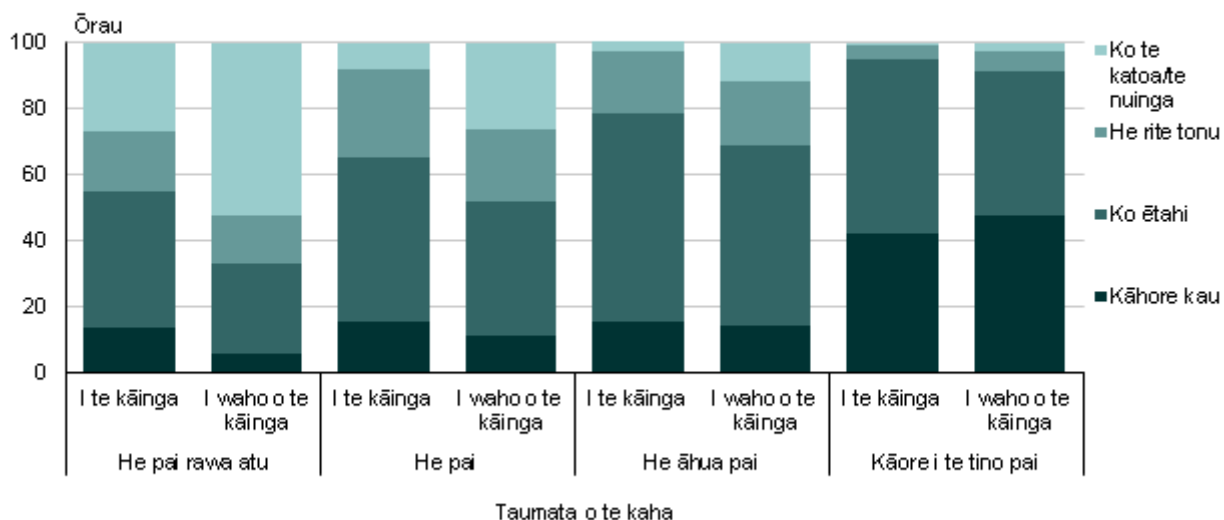
I waho o te kāinga, ko ngā Māori he pai rawa atu te reo Māori ko te tikanga ka tino nui ake te whakamahinga o te reo. Ko te nuinga o tēnei rōpū (52 ōrau) he reo Māori te katoa, te nuinga rānei o te reo kōrero i tētahi wāhi i waho o te kāinga. He rerekē tēnei mai i ērā he pai, he āhua pai rānei te kōrero, ā, ko te nuinga he kōrero Māori i ētahi wā anake.

Ko ngā Māori he pai rawa atu, he pai, he āhua pai rānei te kōrero i te reo Māori, he nui ake tā rātau whakamahi i te reo i waho i te kāinga tēnā i roto. Engari, mō rātau he reo māmā anake tō rātau he tino rerekē tēnei – 53 ōrau i kōrero Māori i ētahi wā i waho o te kāinga, ā, he 58 ōrau i whakamahi i te reo i te kāinga.

Kauwhata 1

Ko te nui o te reo Māori e kōrerohia ana i te kāinga, i waho o te kāinga

Mā te taumata o te kaha
Pipiri–Hereturikōkā 2013



Puna: Tatauranga Aotearoa

Kei te kaha o te matataunga te nui o te reo Māori e kōrerohia ana i te kāinga

Kei te kaha o ngā taumata matataunga me te whai wāhi o ngā tamariki te nui o te reo Māori e whakamahia ana i te kāinga. O ngā whanaungatanga katoa i te kāinga, ko te Māori, ahakoa te matatau, he nui ake te kōrero i te reo ki ā rātau tamariki kōhungahunga.

Ripanga 2

Ko te nui o te reo Māori e kōrerohia i te kāinga

Mā te tangata e kōrerohia atu me te taumata matatau

Pipiri-Hereturikōkā 2013

Ko te taumata matatau o te kōrero Māori	Ko te nui o te reo Māori e kōrerohia i te kāinga	Ko te tangata e kōrerohia atu				
		Kōhungahunga	Tamaiti kura tuatahi	Tamaiti kura tuarua	Matua	Hoa rangatira
		Ōrau (%)				
He pai rawa atu/ he pai	Katoa/nuinga/ōrite ⁽¹⁾	48.1	40.9	38.2	31.9*	26.5
	Ētahi	45.1	49.2	51.2	45.6	51.5
	Kore	6.8**	10.0**	S	22.5*	22.0*
He āhua pai	Katoa/nuinga/ōrite ⁽¹⁾	23.1*	24.2	13.5**	16.1*	15.4*
	Ētahi	68.8	66.9	70.8	57.1	56.9
	Kore	8.1**	8.9**	15.7**	26.8	27.7
Kāore i te tino pai	Katoa/nuinga/ōrite ⁽¹⁾	26.6	4.8*	5.0**	4.6*	2.7*
	Ētahi	67.9	64.7	56.2	32.5	40.3
	Kore	5.6*	30.5	38.8	63.0	57.0

1 Ōrite te reo Māori me te reo Ingarihi (tētahi atu reo rānei)
Ngā tohu:
 S kua tāmia
 * he 30 ōrau, neke atu rānei te hapa tīpako, engari he iti ake i te 50 ōrau
 ** he 50 ōrau, neke atu rānei te hapa tīpako, engari he iti ake i te 100 ōrau

Ko te tikanga ko te hunga he pai rawa atu, he pai rānei te reo kōrero Māori ka ōrite, ka nui ake rānei te kōrero Māori ki te hunga noho me rātau tēnā ki te hunga kāore i te tino matatau.

Ko ngā Māori he itiiti nei te reo Māori he ōrite, he nui ake rānei te kōrero i te reo Māori ki ā rātau tamariki kōhungahunga anake, ā, he tino iti ake te nui o te kōrero ki ētahi atu i roto i tō rātau kāinga.

Ko te hunga matatau ake he nui ake te kōrero i te reo Māori i waho o te kāinga

He whanaungatanga tō te nui ake o te whakamahinga o te reo Māori i waho o te kāinga ki ngā āhuatanga ahurea Māori me te matataunga.

E whā ngā wāhanga matua i waho o te kāinga e tino kōrerohia te reo Māori: i ngā mahi karapu, ā-rōpū rānei pēnei i te kapahaka, te āwhina i te kura, te haere ki ngā hui, me ngā wāhi whakapono. Ko te tikanga he kaupapa ahurea tō ēnei wāhi.

Pērā anō i te whakamahinga i roto i te kāinga, ka nui haere ake te whakamahinga o te reo Māori i waho o te kāinga me te matataunga. Ko te hunga he pai rawa atu te reo kōrero ko rātau ngā mea he ōrite, he nui ake rānei te kōrerohia o te reo, ā, ko te hunga iti nei te reo Māori he iti noa te kōrero.

Ripanga 3

Ko te nui o te reo Māori e kōrerohia i waho o te kāinga

Mā te horopaki o te kōrero me te taumata matatau

Pipiri-Hereturikōkā 2013

Ko te taumata matatau o te kōrero Māori	Ko te nui o te reo Māori e kōrerohia i waho o te kāinga	Ko ngā horopaki i waho o te kāinga						
		Karapu, rōpū runaruna rānei	Ko te āwhina i te kura	Hui	Mahi whakapono	Ko te toro whānau / hoa	Mahi	Hākinaki na
		Ōrau (%)						
He pai rawa atu/ he pai	Katoa/ nuinga	34.9	34.2	27.1	28.5	10.7	18.4	6.0**
	Ōrite ⁽¹⁾	18.4	19.3	25.2	14.9	18.1	12.5	10.8*
	Ētahi	30.5	34.3	40.6	37.5	51.3	36.3	34.4
	Kore	16.3*	12.2*	7.1*	19.0*	19.9	32.8	48.8
He āhua pai	Katoa/ nuinga	11.5*	9.5*	7.0*	11.2*	1.0**	3.0**	S
	Ōrite ⁽¹⁾	21.4*	14.6	15.7	11.9*	12.4	11.8	10.8*
	Ētahi	44.5	51.3	59.7	47.1	57.2	39.4	30.6
	Kore	22.6	24.6	17.6	29.8	29.5	45.8	57.5
Kāore i te tino pai	Katoa/ nuinga	3.9**	1.7**	2.7**	5.3**	S	S	S
	Ōrite ⁽¹⁾	6.8*	6.5*	6.2*	6.9**	3.4	2.7*	2.1**
	Ētahi	37.2	41.9	48.6	30.2	34.1	27.0	15.0
	Kore	52.0	49.9	42.4	57.6	62.3	70.1	82.8

1 Ōrite te reo Māori me te reo Ingarihi (tētahi atu reo rānei)

Ngā tohu:
 S kua tāmia te raraunga
 * he 30 ōrau, neke atu rānei te hapa tīpako, engari he iti ake i te 50 ōrau
 ** he 50 ōrau, neke atu rānei te hapa tīpako, engari he iti ake i te 100 ōrau

5 Ko ētahi atu āhukatanga e pā ana ki te matataunga reo Māori me tōna whakamahinga

E titiro ana tēnei wāhanga ki te whanaungatanga i waenga i te matataunga o te reo Māori me tōna whakamahinga, me ētahi atu āhukatanga o te noho o ngā pakeke Māori.

He tuku kōrero hou a Te Kupenga e hono ana i te matataunga o te reo Māori me tōna whakamahinga, tae atu ki ngā whanaungatanga i waenga i ngā wāhanga matua o te haumitanga o te whakarauoratanga o te reo Māori – pēnei i te tuakiri ahurea, te mātauranga, me te whānau.

Ko ngā āhukatanga matua e toru o te matataunga reo Māori me tōna whakamahinga

Ko ngā tātaritanga i roto i tēnei wāhanga nō te poutārāwaho e wānanga ana i ētahi o ngā wāhanga matua o te noho e pā ana ki te matataunga Māori me tōna whakamahinga.

Tirohia te āpitianga 1: Tikanga mahi, mō ētahi atu kōrero mō tēnei poutārāwaho.

I kitea i roto i te whakamātatau i te poutārāwaho mā te tātari whanaungatanga ngāwari te hononga kaha i waenga i te matataunga reo Māori me tōna whakamahinga, me te ahurea Māori. Ko ngā ine ahurea e pā ana ki te reo ko te:

- reo tuatahi i ākona i te tamarikitanga me te mau haere tonu
- hiratanga o te whai wāhi ki te ao Māori
- mōhio ki te tuakiri iwi Māori
- whai wāhi ki ngā mahi ahurea o ēnei rā
- tuakiri Māori anake, mātāwaka maha rānei.

Putā noa i tēnei pūrongo e whakaatu ana ngā whanaungatanga i waenga i te matataunga reo me tōna whakamahinga, me aua ine, mā te whakamahi tatauranga whakaahua.

E whakaatu ana te kaha o ēnei whanaungatanga kei te honohono katoa ēnei āhukatanga i roto i te ahurea Māori. Mō te nuinga o te Māori, kei roto te reo Māori i tō rātau ahurea, hei tauira, te mōhio ki tō rātau whakapapa, te hono ki tō rātau marae, me te uru ki ngā mahi ahurea o ēnei rā. E arotahi ana ngā whanaungatanga i te wāhi o te reo hei kaupapa taketake nō te ahurea Māori.

Kei raro anō ngā whanaungatanga ngoikore ake, ahakoa hira tonu, i awenga i te matataunga reo me tōna whakamahinga, me ētahi atu ine. Otirā, he whanaungatanga kaha i waenga i te matataunga reo me ngā ine mātauranga, pēnei i te whakaurunga ki te mātauranga reo Māori me te tohu mātauranga teitei rawa. He whanaungatanga anō i waenga i te whakamahinga o te reo Māori i te kāinga me ngā ine whānau pēnei i:

- ngā tamariki e noho ana i te kāinga
- ngā tamariki kei te whakaurua i te mātauranga reo Māori
- te nui o te whānau.

Engari ehara ngā ine pāpori me te oha-pori i te hono kaha ki te matataunga me te whakamahinga o te reo Māori. Hei tauira, ko te tikanga o tēnei ko ngā Māori whai moni whiwhi iti he ōrite te kōrero i te reo ki ērā whai moni whiwhi nui. Otirā, ko te hunga māuiui he ōrite anō te reo ki ngā taumata katoa ki te hunga hauora.

He whanaungatanga kaha i waenga i te matataunga reo Māori, tōna whakamahinga me te taipakeke. Otirā, ko ngā pakeke Māori ake (55+) he mōhio, tino mōhio ake rānei ki te reo i ngā Māori tamariki ake.

[Tirohia Te Kupenga 2013](#) mō te matapaki hōhonu ake mō tēnei whanaungatanga.

He tino hono o te reo Māori ki te ahurea me te tuakiri

He nui ake te matataunga i waenga i a rātau ko te reo Māori tō rātau reo tuatahi

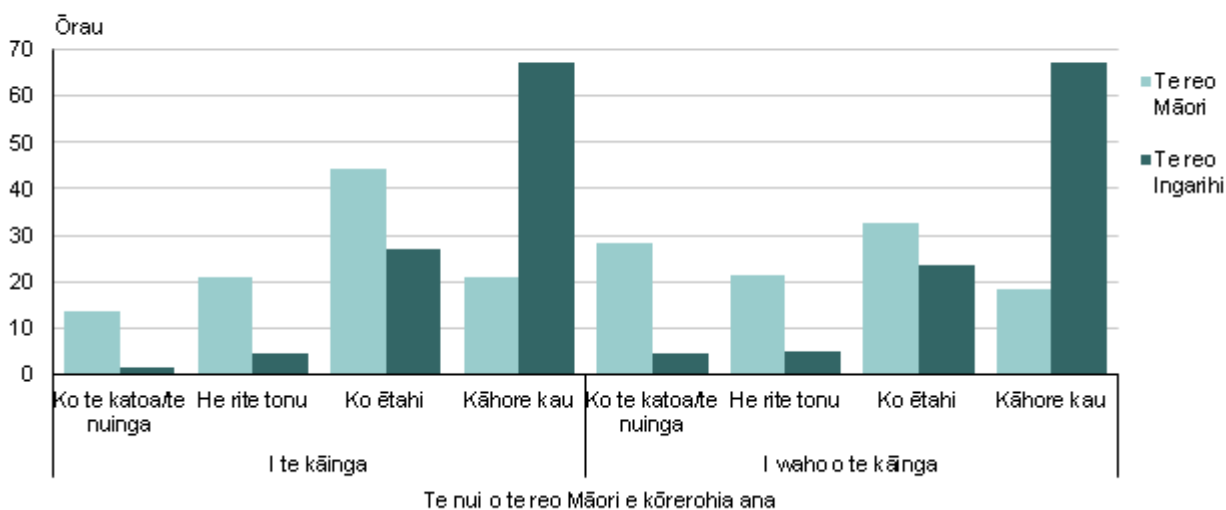
I roto i ngā pakeke Māori ko te reo Māori te reo tuatahi (38,000), he hautoru (32 ōrau) he pai rawa atu te reo, ā, neke atu i te haurua (52 ōrau) he pai rawa atu, he pai rānei te kōrero i te reo. Iti ake i te 10 ōrau he mōhio ki te kōrero i ētahi kupu, rerenga kōrero ruarua anake. Ka whakataurite ki te 7 ōrau o ngā pakeke Māori ko te reo Ingarihi tō rātau reo tuatahi he pai rawa atu, he pai rānei te reo Māori, ā, he whā haurima kāore i te tino pai te reo, he ruarua anake rānei ngā kupu, rerenga kōrero rānei.

He hononga anō o tō te reo Māori hei reo tuatahi ki te whakamahinga nui ake o te reo. O te hunga ko te reo tō rātau reo tuatahi, 79 ōrau he kōrero Māori i ētahi wā i te itinga rawa i te kāinga, ā, 82 ōrau he kōrero Māori i ētahi wā i te itinga rawa i waho o te kāinga. Mō te hunga ko te reo Ingarihi tō rātau reo tuatahi, he 33 ōrau te ōwehenga ki ia wāhanga.

Kauwhata 2

Ko te nui o te reo Māori e kōrerohia ana i te kāinga, i waho o te kāinga

Mā te reo tuatahi
Pipiri–Hereturikōkā 2013



Puna: Tatauranga Aotearoa

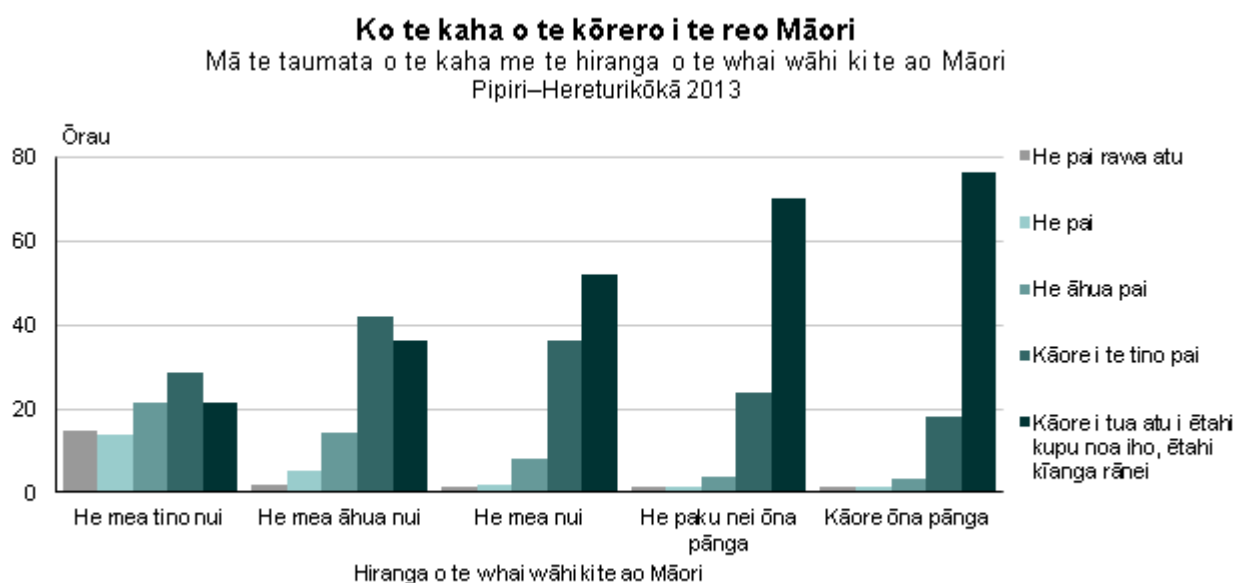
Ko te hira rawa o te ahurea Māori ki te tangata, ko te kaha ake atu o tōna kōrero i te reo Māori

Ko ngā Māori he mea nui ki a rātau te whai wāhi ki te ahurea Māori he pai rawa atu, he pai, he āhua pai rānei te tūpono o te kōrero i te reo Māori, ki ērā he iti ake te hira o te ahurea Māori ki a rātau. He haurua o ngā pakeke Māori 124,000 i kī he mea tino nui ki a rātau te whai wāhi ki tō rātau ahurea Māori he pai rawa atu, he pai, he āhua pai rānei te reo, ā, he 22 ōrau te hunga i kī he mea āhua nui ki a rātau me te 11 ōrau i kī he mea nui ki a rātau.

He iti noa iho ngā tāngata o te 37,000 pakeke Māori i kī kāore ōna pānga te whai wāhi ki te ahurea Māori he mōhio ki te kōrero i te reo Māori. Tata ki te katoa o rātau i kī kāore

ōna pānga te ahurea Māori he iti nei te mōhio ki ētahi kupu noa iho, ētahi kīanga rānei (76 ōrau), he mōhio rānei ki ngā mea māmā noa iho (18 ōrau).

Kauwhata 3



Puna: Tatauranga Aotearoa

Ko te hira rawa o te ahurea reo Māori ki te tangata, ko te kaha ake atu o tōna kōrero i te reo Māori i roto, i waho rānei o te kāinga.

O te hunga i kī he mea tino nui te whai wāhi ki te ahurea Māori, 64 ōrau he kōrero Māori i ētahi wā i te kāinga. Ka whakatauritea tēnei ki te 27 ōrau o te hunga i kī he mea nui, me te 34 ōrau i kī kāore ōna pānga.

O ngā Māori i kī he mea tino nui te whai wāhi ki te ahurea Māori, 66 ōrau he kōrero Māori i ētahi wā i waho o te kāinga. Ka whakatauritea tēnei ki te 44 ōrau o te hunga i kī he mea āhua nui, me te 10 ōrau i kī he paku nei ōna pānga.

He hononga kaha tō te mōhio ki te pepeha me te reo Māori

He kaha te whanaungatanga o te mōhio ki ngā āhuatanga o te pepeha me te matataunga reo me tōna whakamahinga.

Ko ngā pakeke Māori e mōhio ana ki ngā āhuatanga e whitu o tā rātau pepeha (iwi, hapū, maunga, awa, tipuna, waka, marae tipuna) i te nuinga o te wā he pai rawa atu, he pai, he āhua pai rānei te kōrero i te reo Māori ki ērā he iti ake te mōhio ki aua āhuatanga. O te hunga i te mōhio ki ngā āhuatanga katoa o tā rātau pepeha, 44 ōrau he pai rawa atu, he pai, he āhua pai rānei te kōreo i te reo, ā, he 7 ōrau o rātau he mōhio ki ngā āhuatanga e ono, iti ake rātau o tā rātau pepeha.

Ko ngā pakeke Māori kāore i paku mōhio ki tā rātau pepeha ko te nuinga o rātau kāore i te tino pai tō rātau reo (14 ōrau) me ērā he ruarua anake ngā kupu, rerenga kōrero rānei e mōhio ana rātau (80 ōrau).

Ko ngā pakeke Māori i te mōhio ki ngā āhuatanga katoa o tā rātau pepeha he nui ake te tūponotanga ki te kōrero i te reo Māori i roto me waho o te kāinga ki ērā kāore i te mōhio. O te hunga he mōhio ki te katoa o tā rātau pepeha, 62 ōrau he kōrero Māori i ētahi wā i roto i te kāinga, ā, 64 ōrau he kōrero Māori i ētahi wā i waho o te kāinga. Ka whakatauritea ki te 16 ōrau o te hunga he iti ake te mōhio ki ngā āhuatanga o tā rātau pepeha – mō roto me waho o te kāinga.

Ko te hunga whakauru ki ngā mahi ahurea o ēnei rā ko te tikanga he matatau ki te reo Māori

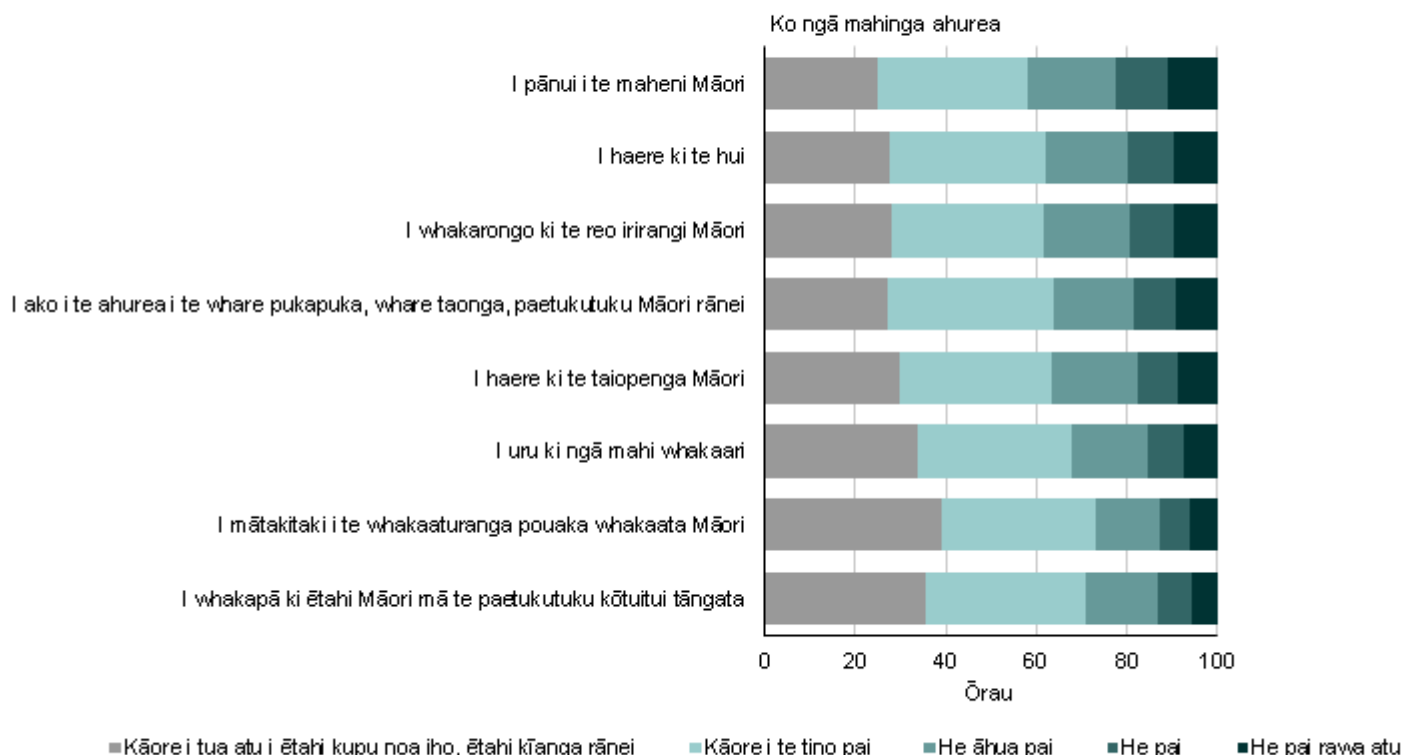
Ko ngā pakeke Māori ka whakauru ki ngā mahi ahurea o ēnei rā ko te tikanga he pai rawa atu, he pai, he āhua pai rānei te reo Māori ki ērā kāore e whakauru.

Ko te pānui maheni Māori, te whakarongo ki te reo irirangi Māori, te haere ki tētahi hui ngā mahi whai i te hunga matatau ki te reo nui rawa.

Kauwhata 4

Ko te kaha o te kōrero o te reo Māori

Mā te whai wāhi ki ngā mahinga ahurea
Pipiri–Hereturikōkā 2013



Puna: Tatauranga Aotearoa

Engari, ko te āhua nei kāore he aukatinga ki te whakauru ki ngā mahi ahurea mēnā kāore koe i te tino mōhio ki te reo Māori. Hei tauira, e toru hauwhā (73 ōrau) o ngā pakeke Māori i mātakitaki i tētahi whakaaturanga pouaka whakaata Māori he māmā noa iho tō rātau mōhio ki te reo.

He hononga kaha tō mātāwaka kotahi ki te reo Māori

O ngā pakeke Māori i kī he Māori anake rātau, e 135,500 (68 ōrau) he mōhio ki ētahi kupu noa iho, ētahi kīanga reo Māori rānei. He mea waihanga tēnei tatau i te 17 ōrau he pai, he pai rawa atu rānei te reo, 17 ōrau he āhua pai te reo, ā, 34 ōrau kāore i tino pai te reo.

O te hunga i kī he nui atu i te kotahi ō rātau mātāwaka, 45 ōrau he mōhio nui atu i ētahi kupu noa iho, ētahi kīanga reo Māori rānei, tae atu ki te 6 ōrau he pai rawa atu, he pai rānei te reo.

Ko te hunga Māori anake ko te tikanga he nui ake te kōrero Māori i roto me waho o te kāinga tēnā i te hunga whai mātāwaka maha. He haurua o rātau he Māori anake he kōrero Māori i ētahi wā ki tētahi tangata i roto i tō rātau kāinga. Kei roto i tēnei ōwehenga ko te 13 ōrau he ōrite te kōrerohia o te reo ki tētahi atu reo, nui ake rānei ki tētahi tangata. O te hunga mātāwaka maha, 27 ōrau he kōrero Māori i ētahi wā i te kāinga, tae atu ki te 4 ōrau he ōrite te kōrerohia o te reo Māori, nui ake rānei.

Ko te hunga Māori anake ko te tikanga he nui ake te whakamahi i te reo Māori i waho o te kāinga tēnā i te hunga whai mātāwaka maha. I whakaaturia e te rangahau he 50 ōrau i te itinga rawa he kōrero Māori i ētahi wā, tae atu ki te 20 ōrau he ōrite, he nui ake rānei te kōrerohia o te reo. Mō te hunga whai mātāwaka maha ko ēnei ōwehenga taurite he 27 ōrau me te 7 ōrau.

Ka pā te matataunga kōrero i te reo Māori ki te mātauranga

Ka pā te whakauru ki te mātauranga reo Māori ki te matataunga

I roto i te horopaki o Te Kupenga, ko te mātauranga reo Māori ko te kōhanga reo, kura kaupapa/wharekura me te wānanga. Otirā, 134,000 (28 ōrau) ngā pakeke Māori i whakauru ki tētahi āhuatanga o te mātauranga reo Māori:

- 60,500 (13 ōrau) kei te kōhanga reo
- 29,000 (6 ōrau) kei te kura kaupapa
- 16,500 (4 ōrau) kei te kōhanga reo me te kura kaupapa
- 79,500 (18 ōrau) kei te wānanga.

Ko ngā pakeke Māori i whakaurua ki ngā momo mātauranga reo Māori e toru he 7,000 te maha.

He pānga o te whakaurunga atu ki tētahi momo mātauranga reo Māori – otirā te kōhanga reo me te kura kaupapa – ki te matataunga mōhio ake ki te kōrero i te reo Māori. He haurua o ērā i whakauru ki roto i te kōhanga reo me te kura kaupapa he pai rawa atu, he pai rānei te reo, ā, he 92 ōrau he mōhio nui atu i ētahi kupu noa iho, ētahi kīanga rānei.

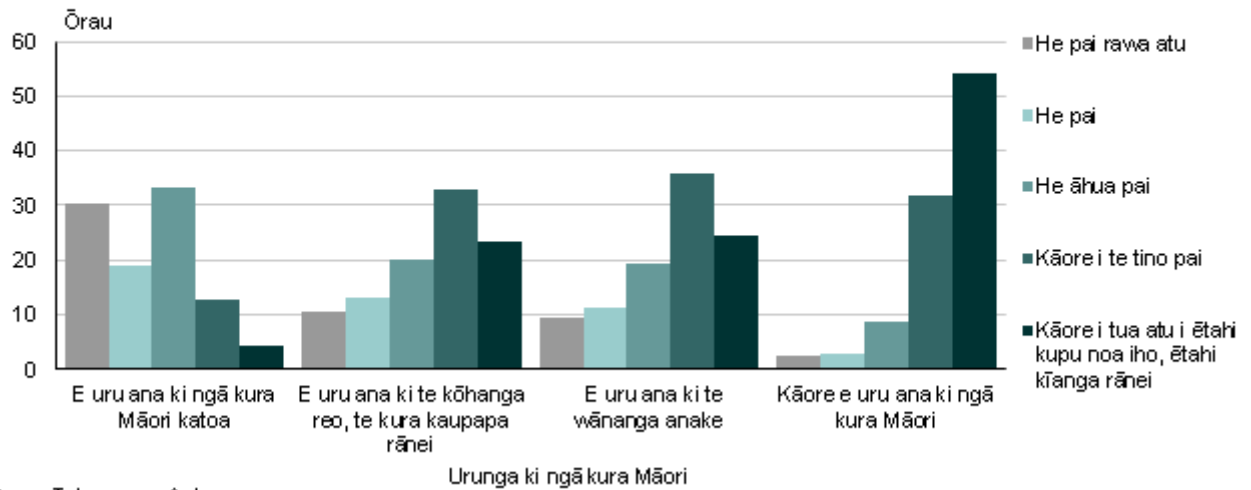
Mō ngā pakeke Māori i whakauru anake ki roto i te kōhanga reo, kura kaupapa rānei, 19 ōrau he pai rawa atu, he pai rānei te reo, ā, 92 ōrau he mōhio nui atu i ētahi kupu noa iho, ētahi kīanga rānei.

O ngā pakeke Māori kāore i whakauru atu ki te mātauranga reo Māori, e 6 ōrau he pai rawa atu, he pai rānei te reo, ā, he iti ake i te haurua (46 ōrau) he mōhio nui atu i ētahi kupu noa iho, ētahi kīanga rānei.

Ko te tikanga ko ngā pakeke Māori i whakaurua atu ki te mātauranga reo Māori, he nui ake te kōrero Māori ki tētahi atu i tō rātau kāinga tēnā ki te hunga kāore i whakaurua atu. O te hunga i whakaurua ki tētahi momo mātauranga reo Māori, 64 ōrau he kōrero Māori i ētahi wā i roto i te kāinga. Ka whakatauritea tēnei ki te 27 ōrau o te hunga kāore i whakaurua ki tētahi momo mātauranga reo Māori.

Kauwhata 5

Ko te kaha o te kōrero i te reo Māori Mā te taumata o te kaha me te urunga ki ngā kura Māori Pipiri–Hereturikōkā 2013



Puna: Tatauranga Aotearoa

Ka pā ngā tohu mātauranga teitei ki te matataunga reo nui ake

Ko ngā pakeke Māori whai tohu mātauranga teitei, pēnei i tētahi tohu pōkairua taumata 5, 6 rānei, he tohu paetahi, teitei ake rānei, ko te tikanga he pai rawa atu ake, he pai ake, he āhua pai ake rānei tō rātau reo Māori i te hunga whai tohu mātauranga iti iho.

O ngā Māori whai tohu paetahi, teitei ake rānei, he 19 ōrau he pai rawa atu, he pai rānei tō rātau reo. Ka whakataurite tēnei ki te 16 ōrau o rātau he whai tohu pōkairua taumata 5, 6 rānei, he 8 ōrau o rātau he whai tiwhikete taumata 1–4, me te 10 ōrau o rātau kāore he tohu. Engari, ko ngā ōwehenga whānui o te hunga he kōrero Māori i ētahi wā (he nui atu i te mōhio i ētahi kupu noa iho, ētahi kīanga rānei) he āhua ōrite ahakoa te taumata o te tohu mātauranga.

He hāngai te whakamahinga o te reo i te kāinga ki ngā āhuatanga o te whānau

He nui ake te whakamahinga o te reo Māori mēnā he tamariki kei roto i te kāinga

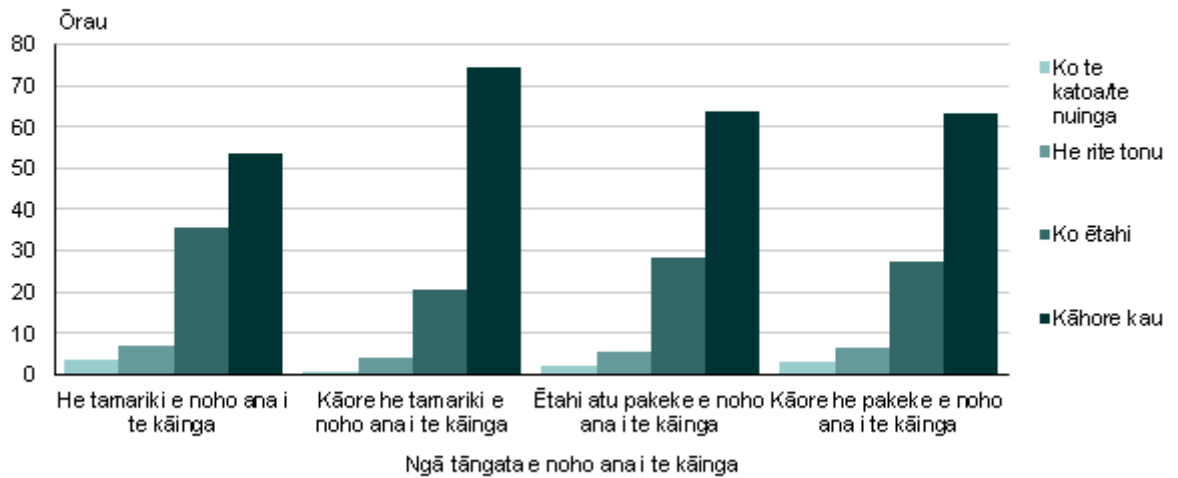
Mēnā he tamariki kei te kāinga ko te tikanga ka nui ake te matataunga o te reo. O ngā Māori he whai tamariki i te kāinga, 58 ōrau he momo matataunga ki te kōrero i te reo Māori (neke atu i ētahi kupu noa iho, ētahi kīanga rānei), ka whakataurite ki te 53 ōrau o rātau kāore he tamariki i roto i te kāinga.

Ehara i te mea ohorere, engari he hononga kaha i waenga i te whai tamariki i roto i te kāinga me te whakamahinga nui ake o te reo. O ngā pakeke Māori whai tamariki i roto i tō rātau kāinga, 46 ōrau he kōrero Māori i ētahi wā i te kāinga, tae atu ki te 11 ōrau he ōrite te kōrerohia o te reo Māori, nui ake rānei. Mō te hunga kāore he tamariki i te kāinga he 25 ōrau me te 5 ōrau ngā ōwehenga taurite.

Kauwhata 6

Ko te nui o te reo Māori e kōrerohia ana i te kāinga

Mā ngā tāngata e noho ana i te kāinga
Pipiri–Hereturikōkā 2013



Puna: Tatauranga Aotearoa

Ko te hunga whai tamariki i whakaurua ki te mātauranga reo Māori he nui ake te kōrero i te reo Māori

Ko te hunga whai tamariki i whakaurua ki te mātauranga reo Māori he kaha ake te whakamahi i te reo i te kāinga. I tino kitea tēnei i te hunga whai tamariki i whakaurua ki te kōhanga reo, kura kaupapa rānei, tēnā i te hunga whai tamariki kāore i te whai mātauranga reo Māori.

O te hunga whai tamariki i whakaurua ki te kura kaupapa, 78 ōrau he kōrero Māori i ētahi wā i roto i te kāinga, tae atu ki te 35 ōrau he ōrite te kōrero i te reo, nui ake rānei. He ōrite ngā ōwehenga mō te hunga whai tamariki i te kōhanga reo: he 70 ōrau he kōrero Māori i ētahi wā i te kāinga, tae atu ki te 25 ōrau he ōrite te kōrero i te reo, nui ake rānei.

Ko te nuinga (62 ōrau) o ngā Māori kāore i whakaurua ā rātau tamariki te mātauranga reo Māori kāore i paku kōrero i te reo i te kāinga, ā, 33 ōrau he kōrero Māori i ētahi wā, ā, he 5 ōrau he ōrite te kōrerohia, nui ake rānei.

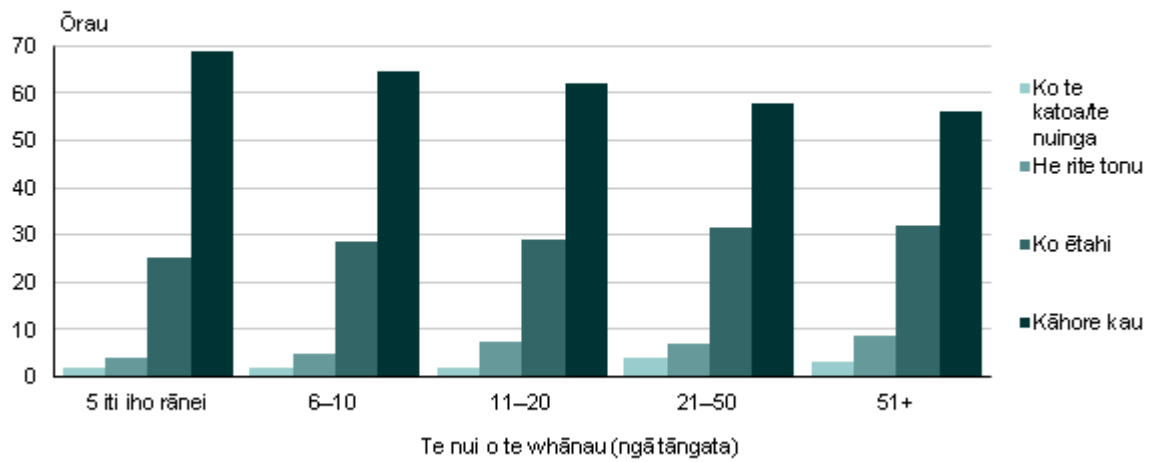
He whanaungatanga tō te nui o te whānau ki te whakamahinga nui ake o te reo

Ko te nui rawa atu o te whānau o te tangata, ko te tikanga ka nui ake te whakamahinga o te reo Māori i te kāinga. O te hunga he 51 tāngata, neke atu rānei i roto i tō rātau whānau, 44 ōrau he kōrero Māori i ētahi wā i te itinga rawa i te kāinga, tēnā i te 31 ōrau o ngā pakeke Māori he rima tāngata, iti ake rānei i roto i te whānau.

Kauwhata 7

Ko te nui o te reo Māori e kōrerohia ana i te kāinga

Mā te nui o te whānau
Pipiri–Hereturikōkā 2013



Puna: Tatauranga Aoteroa

6 Ko ngā kitenga o Te Kupenga i roto i te horopaki whānui ake

E kōrero ana tēnei wāhanga i te pānga o ngā kitenga o te pūrongo ki ngā ia me ngā taurira whānui mō te matataunga kōrero i te reo Māori. Ka āta tirohia te pikitanga o te maha o te Māori ka taea te kōrero i ētahi mea māmā noa i te reo, ā, he mea kōkiri e ngā Māori 15–44 ngā tau.

He nui ake te aronui ki te whai i te ao Māori

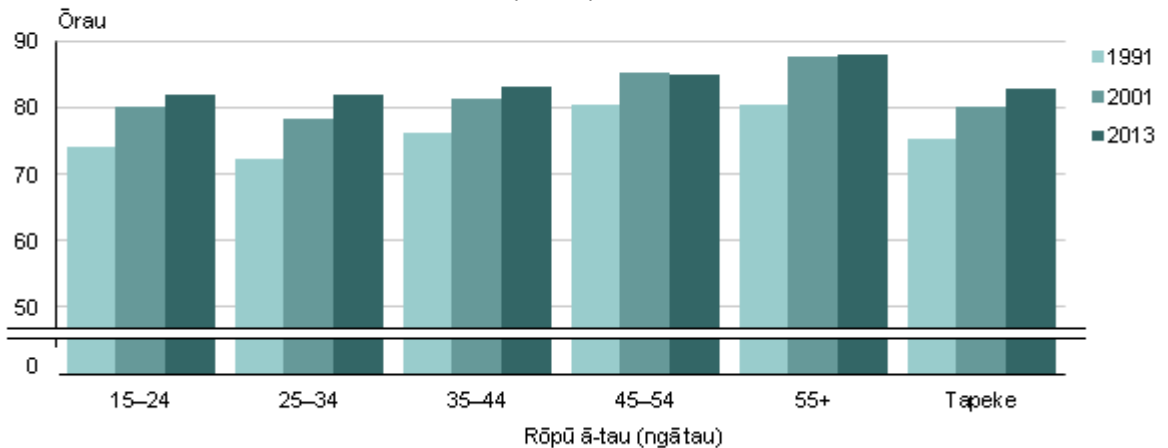
Kāore he raraunga whakataurite i roto i Te Kupenga hei whakaatu i ngā rerekētanga i roto i te wā mō ngā ine ahurea Māori. Engari, e ai ki ētahi atu raraunga (whāiti) he pikitanga i roto i te whakaurunga me te whai i te ahurea Māori mai i te tau 2004. E whakaatu ana ngā raraunga o te Tatauranga Whānui i te ōwehenga o ngā pakeke Māori i kī i ahu mai rātau i ngā iwi nui ake i te kotahi, i piki mai i te 75.5 ōrau i te tau 1991 ki te 82.9 ōrau i te tau 2013. Hei tā Kukutai rāua ko Rārere (2013) ko te tikanga pea o tēnei pikitanga he nui ake te hunga kei te whai i te ao Māori.

Otirā, ko te ōwehenga o ngā Māori tamariki ake i kī i ahu mai rātau i ngā iwi nui ake i te kotahi, i nui ake te piki i ngā Māori pakeke ake mai i te tau 2001. Nā te whanaungatanga i waenga i te matataunga reo me te whai wāhi ki te ahurea Māori, ko te pikitanga pea o ngā Māori e taea ana te kōrero mō ngā kaupapa ngāwari anake i te reo Māori he tohu pea i te kaunake nui o te Māori ki te whai i tōna ahurea.

Kauwhata 8

Ko te ōwehenga o ngā uri Māori he kotahi te iwi, neke atu rānei

Mā te rōpū ā-tau
1991, 2001, me 2013



Puna: Tatauranga Aotearoa

Ko te whai wāhi ki te mātauranga reo Māori

I whakatuwherahia te kōhanga reo tuatahi i te tau 1982. I piki haere tonu te maha o ngā tamariki i haere ki te kōhanga reo i te tekau tau mai i 1980, ā, ka eke ki tōna taumata i te tau 1993; neke atu i te 14,000 ngā tamariki rēhita. I taua wā tata ki te haurua o ngā tamariki Māori i ngā ratonga mātauranga kōhungahunga nō te kōhanga reo. Mai i te tau 2001 i heke te maha o ngā tamariki rēhita ki te 9,500, ā, noho pēnei tonu atu ki te tau 2012. Engari, neke atu i te 60,000 ngā Māori i kuraina i te kōhanga reo mai i tōna

tīmatanga, ā, he wāhanga nui tonu tō ēnei kaupapa i roto i te whakarauoratanga o te reo Māori.

I te tau 2009, 6,267 ngā ākonga i te rēhita i te kura kaupapa Māori, he 9.3 ōrau te pikitanga mai i te tau 2002, ā, 5,428 i te rēhita. Ka whakataurite i tēnei pikitanga ki te pikitanga 9.5 ōrau o te katoa o te taupori ākonga Māori i taua wā anō.

Mai i te tau 2004, kei mua ngā wānanga e haere ana i roto i ngā mahi whakaakoranga reo Māori i te taumata kura tuatoru, e aro ana ki ngā akoranga rumaki reo me te whakamahi i te reo Māori i roto i ngā āhuatanga maha. Mai i te tau 2001 me te 2005 he tino maha rawa atu ngā ākonga reo Māori i whai i te mātauranga tuatoru (Earle, 2007). I eke tēnei ki te taumata i te tau 2003, ā, neke atu i te 60,000 i rēhita i taua tau i roto i ngā akoranga reo Māori. Ko te nuinga o ēnei ākonga i rēhita ki ngā tiwhikete taumata 4 i ngā wānanga.

I kitea te tino heke o ngā ākonga kura tuatoru reo Māori mai i te tau 2003 ki te 2006 nā te iti ake o ngā akoranga e whakaratohia ana i roto i ngā wānanga e rua. I pēnei ai nā ngā arotake pūtea o ngā tohu taumata iti ake, ngā rerekētanga whakahaere, me te iti ake o te hiahiatia (Tāhuhu o te Mātauranga, 2013). I te tau 2012 tata ki te 10,000 ngā ākonga i whakauru ki ngā akoranga reo i ngā kaiwhakarato kura tuatoru.

E ai ki a Earle (2007) ko te take matua o te uru ki ngā kura tuatoru ako ai ko te tino whakapiki ake i te maha o te hunga e mārama ana ki te reo. E tautokohia ana tēnei e ngā kitenga a Te Kupenga (Tatauranga Aotearoa, 2014), e whakaatu ana i ngā pikitanga nui o ngā pakeke Māori e mārama ki te reo māmā.

Kāore e taea e ngā akoranga mātauranga kura tuatoru anake te whakatipu i te matataunga ki te kōrero Māori. Me whai anō ngā ākonga i ngā wāhi maha i roto me waho o te kāinga e whakamahia ana, e tautokohia ana te reo.

Kaua rawa ēnei mea katoa e tōhipa i te hiranga o ngā kaikōrero reo tuatahi i roto i te whakarauoratanga o te reo. I kitea e mātau te whanaungatanga kaha i waenga i te reo Māori hei reo tuatahi me te matataunga ki te kōrero pai rawa atu, pai rānei. Kāore i tino rerekē te maha o ngā kaikōrero reo tuatahi (8 ōrau) i roto i ngā tau tekau, ā, he ōrite te maha ki te hunga he pai rawa atu, he pai rānei te reo.



7 Ko te whakaotinga

Mai i ngā tau waenga o tērā rau tau, kua heke haere te whakamahinga o te reo Māori, ā, i ōrite te pōhēhētia ka mate te reo. I tēnei rā, he maha ngā rautaki me ngā kaupapahere kua waihangatia e whai ana ki te tiaki me te whakarauora i te reo.

I whai wā mātau i a Te Kupenga ki te hōpara hōhonu i te matataunga o te reo me tōna whakamahinga. I taea e mātau te tiro tiro ki ngā kōrero mō te reo me ētahi atu ine pāpori, ahurea, ōhanga hoki kia mārama ai ki ngā āhuratanga e pā ana ki te matataunga reo me tōna whakamahinga.

Ko ngā otinga o te rangahau i whakaatu i te whanaungatanga i waenga i te matataunga kōrero Māori me tōna whakamahinga i roto me waho o te kāinga. Ko te hunga he pai, he pai ake rānei te reo ka nui ake te whakamahinga. Engari, ko te matataunga reo pai kāore e tino whakaatu i ngā rerekētanga katoa o te whakamahinga o te reo.

He kaha ngā whanaungatanga i waenga i te matataunga kōrero i te reo Māori me ngā ine mātauranga, otirā te urunga ki te mātauranga reo Māori. Ko ngā ine whānau, pēnei i te whai tamariki i roto i te kāinga, he whanaungatanga kaha ki te whakamahinga nui ake o te reo i roto i te kāinga.

E whakaatu anō tēnei tātaritanga i te whanaungatanga kaha i waenga i te matataunga reo Māori me tōna whakamahinga, me ētahi atu āhuratanga ahurea Māori, tae atu ki:

- te reo tuatahi i ākona i te tamarikitanga me te mau haere tonu te mōhio ki te pepeha (tuakiri iwi)
- te whai wāhi ki ngā mahi ahurea o ēnei rā.

He taunakitanga anō te kaha o ēnei whanaungatanga o te reo hei wāhanga taketake o te ahurea me te tuakiri Māori.



Ko ngā tohutoro

Dewes, K (2012, Hōngongoi 31). I whakahuatia mai i a A Solomon [Progress with te reo 'huge'](#). *Rotorua Daily Post*. E wātea ana i www.nzherald.co.nz

Earle, D. (2007). [He tini manu reo: learning te reo Māori through tertiary education](#). E wātea ana i www.educationcounts.govt.nz.

Kukutai, T. rāua ko Rārere, M. (2013). Tracking patterns of iwi identification in the New Zealand Census. *New Zealand Population Review*, 39, 1–24.

Te Tāhuhu o te Mātauranga (2013). [Moving through: Tertiary Education Strategy monitoring 2010-2012](#). E wātea ana i www.educationcounts.govt.nz.

Te Manatū Whakahiato Ora (2010). [2010 The Social Report: Te Pūrongo Oranga Tangata](#). E wātea ana i <http://socialreport.msd.govt.nz>.

Tatauranga Aotearoa (2014). [Te Kupenga 2013](#). E wātea ana i www.stats.govt.nz.

Te Puni Kōkiri (2014). [Te Rautaki Reo Māori](#). E wātea ana i <http://www.tpk.govt.nz>.

Āpitianga 1: Tikanga Mahi

Raraunga mai i Te Kupenga

Ahu mai ana ngā raraunga mō tēnei pūrongo i Te Kupenga 2013. He rangahau a Te Kupenga mō te oranga o te Māori. Kei roto ko ngā ine e pā ana ki te tirohanga Māori ki te oranga ahurea, tae atu ki te wairuatanga, tikanga, whanaungatanga, me te reo Māori. Kei roto anō i te rangahau ko ngā ine whānui mō te oranga pāpori me te ōhanga, pēnei i ngā mahi whai utu, utu kore rānei, te whai wāhitanga ki te hapori, me te āhua hauora i runga i te aromatawai whaiaro. Ko tā ngā ine he whakaatu i te tirohanga whānui o te oranga pāpori, ahurea me te ōhanga o te Māori i Aotearoa i te tau 2013.

[Kei Te Kupenga 2013 \(Wāhanga kōunga raraunga\)](#) ētahi atu kōrero.

I whakamahia e Te Kupenga he pātai hei whakautu mā te tangata ake hei aromatawai i te pūmanawa reo kōrero Māori o te kaiwhakautu. I pātaihia ngā kaiwhakautu kia whakaurua rātau anō ki tētahi o ngā rōpū e rima e whai ake:

1. he pai rawa atu (ka taea te kōrero mō te nuinga o ngā kaupapa i te reo Māori)
2. he pai (ka taea te kōrero mō ngā kaupapa maha i te reo Māori)
3. he āhua pai (ka taea e au te kōrero mō ētahi kaupapa i te reo Māori)
4. kāore i te tino pai (ka taea te kōrero mō ngā kaupapa ngāwari anake i te reo Māori)
5. kāore i tua atu i ētahi kupu noa iho, ētahi kīanga rānei.

Ko ngā kaiwhakautu i tātai i tō rātau mōhio ki te reo Māori mai i te 1 ki te 4 i pātaihia anō ētahi pātai āmiki ki a rātau mō ngā wāhi i whakamahia e rātau te reo Māori. Kāore i pātaihia te hunga 'kāore i tua atu i ētahi kupu noa iho, ētahi kīanga rānei' tō rātau mōhio ki te whakautu i ngā pātai āmiki.

I pātaihia ngā kaiwhakautu mō tā rātau whakamahi i te reo Māori i waho me roto i te kāinga. Ka taea e ngā kaiwhakautu te whiriwhiri mai i te:

- kāore he reo Māori
- ētahi reo Māori
- he rite tonu te nui o ngā reo e rua (tētahi atu reo rānei)
- ko te reo Māori te nuinga
- he reo Māori te katoa.

Whakamahia ai te "logistic regression" hei tikanga tātari

I whakamahia e mātau te tikanga "logistic regression" i roto i tēnei tātaritanga hei whakarite he aha ngā ine whai whanaungatanga motuhake kaha ki te matatau, ki te whakamahi hoki i te reo. I whakamahia anaketia taua tikanga ki te whakarite he aha ngā ine ka whakaurua ki tēnei pūrongo ka mutu i whakatakotohia aua ine mā te whakamahi i te tatauranga whakaahuatanga. Kāore he otinga o taua tikanga i roto i te pūrongo matua. Engari, e whakaaturia ana ngā otinga kia mōhio ai koe.

I te mea kei te ararau te raupapa o ngā kōwhiringa urupare e rima katoa e taea ana mō ngā pātai reo Māori katoa, i whakamahia e mātau te "cumulative multinomial logistic regression". Ko te painga o te whakamahi i te "logistic regression" he pupuri tonu i ētahi atu āhuatanga, me te tiro tiro anō ki te whanaungatanga i waenga i te tūponotanga o te kōrero, o te whakamahinga rānei o te reo Māori me te āhuatanga e arotahitia ana.

E whakaatu ana te "cumulative multinomial logistic regression" i te whanaungatanga i waenga i te rōpū iti ake ki ngā mea teitei ake katoa o ngā taurangi reo Māori me te whanaungatanga i waenga i te rōpū iti tuarua me ngā rōpu teitei ake katoa. I te mea he

ōrite te whanaungatanga i waenga i ngā rōpū takirua katoa, kotahi anake te huinga o ngā tau whakarea. Nō reira, e kōrero ana ngā otinga mai i te tauira ki te tūponotanga o te whai pūmanawa kōrero Māori nui ake me te nui ake o te whakamahinga o te reo Māori i roto me waho o te kāinga.

He tauira o te reo Māori

Ahako te tukanga matatini o te pūmanawa kōrero me te whakamahinga o te reo Māori mō te Māori, kei roto i Te Kupenga ngā ine maha e taea ai e tātau te titiro he aha ngā mea kei roto i tēnei tukanga. Mō te whakaiti i te maha o ēnei ine ka whakaurua atu ki te tauira, i tīmata mātau me tētahi poutarāwaho māmā hei āwhina pea ki te whakamārama he pēhea te tutuki i tētahi pūmanawa tiketike, whakamahinga reo Māori rānei. Kei roto i tēnei poutarāwaho ko ngā kaupapa e whai ake:

- ahurea me te tuakiri
- mātauranga
- whānau
- ōhanga-pāpori
- pāpori
- taturanga ā-iwi.

I tohua e mātau ētahi ine mai i Te Kupenga hei whakaatu i ia kaupapa nei i roto i te tauira.

Te whakamārama i ngā ōwehenga tūwehe

E whakaatu ana mātau i ngā otinga o te tātaritanga i roto i te āpitianga 2 hei ōwehenga tūwehe. Ko te ōwehenga tūwehe koia tērā ko te tūponotanga ka heipū tētahi āhuatanga e whakawehea ana ki te tūponotanga ka heipū kē mai he aronga kē. Hei tauira, mēnā e 400 ngā wāhine he kōrero Māori, ā, e 200 kāore i kōrero Māori. Ko te tūwehe ka kōrero Māori tētahi wahine he $400/200 = 2$, arā, 2 ki te 1. Ko te tikanga o tēnei he āhua pai te tūponotanga he kōrero Māori tētahi wahine. Hei tauira anō, mēnā e 500 ngā tāne he kōrero Māori, ā, e 1,000 kāore i kōrero Māori. Ko te tūwehe ka kōrero Māori tētahi tāne he $500/1,000 = 0.5$, arā, 1 ki te 2. He tino iti ake tō rātau tūponotanga he kōrero Māori i ngā mea wāhine.

Mō ngā taurangi whakamāramatanga haere tonu (hei tauira, te taipakeke), ko te ōwehenga tūwehe nui ake i te 1 he tohu i te tūponotanga nui ake o te kōrero i te reo Māori me te pikitanga o te taurangi whakamārama, ā, ko te ōwehenga tūwehe iti ake i te 1 kei te tohu i te tūponotanga iti ake.

Mō ngā taurangi whakamārama ā-rōpū, ka whakataurite te ōwehenga tūwehe i te tūponotanga o te kōrero i te reo Māori ki te rōpū tohutoro. Kei te tohu te ōwehenga tūwehe nui ake i te 1 i te tūponotanga nui ake o te kōrero Māori tēnā ki te rōpū tohutoro, ā, ko te ōwehenga tūwehe iti ake i te 1 kei te tohu i te tūponotanga iti ake.

Āpitihanga 2: Ngā otinga o te "logistic regression"

E whakaaturia ana ngā hua o tā mātau tātaritanga i te ripanga o te āpitihanga 1. Ka tātarihia ngā āhuatanga e pā ana ki te tūponotanga kōrero Māori me te whakamahi i te reo Māori i roto me waho o te kāinga mō ngā pakeke Māori.

Ripanga āpitihanga 1

Te tūponotanga o te whakamahi, te kōrero rānei i te reo Māori

Āhuatanga	Rōpū (ina hāngai ana)	Matatau	Te whakamahinga i roto i te kāinga	Te whakamahinga i waho o te kāinga
			Ōwehenga tūwehe	
Reo tuatahi	Ingarihi	0.193*	0.306*	0.336*
	Te Reo Māori	Rōpū tohutoro		
Hiranga o te ahurea	Tino/āhua	2.836*	3.861*	5.583*
	Āhua	2.021*	2.556*	3.585*
	Iti	1.245	1.885	2.349*
	Kore rawa	Rōpū tohutoro		
Mōhio ki ngā āhuatanga katoa o te mihi	Āe	4.024*	1.626*	1.904*
	Kāo	Rōpū tohutoro		
Whakauru ki ngā mahi ā-rēhia		1.760*	2.049*	2.931*
Whakarongo ki te reo irirangi Māori		1.528*	1.356*	1.499*
He pānui maheni Māori		1.340*	1.567*	1.577*
Mātāwaka	Māori anake	Rōpū tohutoro		
	Māori me tētahi atu	0.718*	0.792	0.842
Mātauranga reo Māori	I uru ki te katoa	3.051*	1.153	2.243*
	I uru ki te kōhanga reo me te kura	1.773*	1.191	1.200
	I uru ki te wānanga anake	1.404*	1.276	1.400
	Kāore i uru ki tētahi	Rōpū tohutoro		
Tohu mātauranga	Kāore he tohu mātauranga	Rōpū tohutoro		
	Taumata tiwhikete 1-4	1.101	1.134	1.248
	Taumata pōkairua 5-6	1.500*	1.280	1.430
	Tohu paetahi taumata 7, teitei ake rānei	1.639*	1.283	1.335
Tamaiti kei roto i te mātauranga reo Māori	Āe	1.254	2.171*	1.685*
	Kāo	Rōpū tohutoro		
Te nui o te whānau		1.000	1.000*	1.000*
Ngā tamariki i roto i te kāinga	Āe	Rōpū tohutoro		
	Kāo	1.140	0.403*	0.988
Pakeke		0.986*	0.990*	1.006
Moni whiwhi ā-whare	\$30,000, iti ake rānei	1.443*	1.113	1.389
	\$30,001-\$70,000	1.147	1.175	1.158
	\$70,001-\$100,000	1.127	1.057	1.400
	\$100,001, nui ake rānei	Rōpū tohutoro		
Hauora (mā te tangata ake e whakatau)	Tino rawe	0.896	0.819	0.865
	Tino pai	1.084	1.056	0.909
	Pai	0.911	1.008	1.105
	Āhua pai/koretake	Rōpū tohutoro		

Āhuatanga	Rōpū (ina hāngai ana)	Matatau	Te whakamahinga i roto i te kāinga	Te whakamahinga i waho o te kāinga
Ōwehenga tūwehe				
Tohu: * kei te tohu i te hiranga i te taumata hiranga 5 ōrau.				