

Building Consents Issued: October 2016

Embargoed until 10:45am – 19 December 2016

Key facts

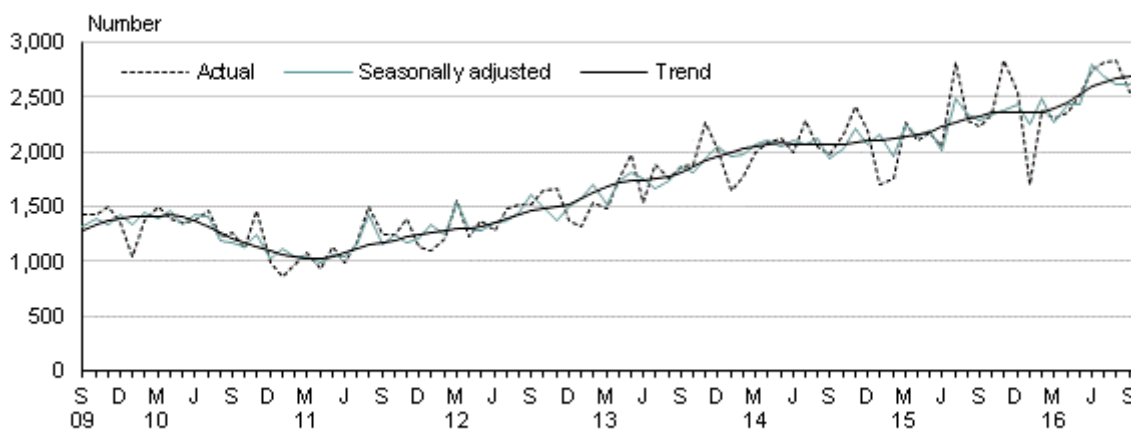
In October 2016, building consents were issued for 2,575 new dwellings:

- 1,802 houses
- 370 townhouses, flats, and units
- 229 apartments
- 174 retirement village units.

The seasonally adjusted number of new dwellings consented rose 2.6 percent. However, the trend is showing signs of flattening.

In the year ended October 2016, 30,161 new dwellings were consented – up 14 percent from the October 2015 year.

New dwellings consented
Monthly



Source: Statistics New Zealand

Including alterations, the value of building work consented in the October 2016 month was \$1.7 billion, comprising \$1.1 billion of residential work and \$526 million of non-residential work.

Liz MacPherson, Government Statistician
ISSN 1178-0231
19 December 2016

Commentary

- [New dwellings up in October](#)
- [New dwellings up in 12 regions](#)
- [Non-residential building consents valued at \\$526 million](#)
- [Consents for all buildings total \\$1.7 billion](#)
- [Delay to the release](#)
- [Find data tables](#)

Figures given are not adjusted for seasonal fluctuations unless otherwise stated. Values include GST and are not adjusted for inflation.

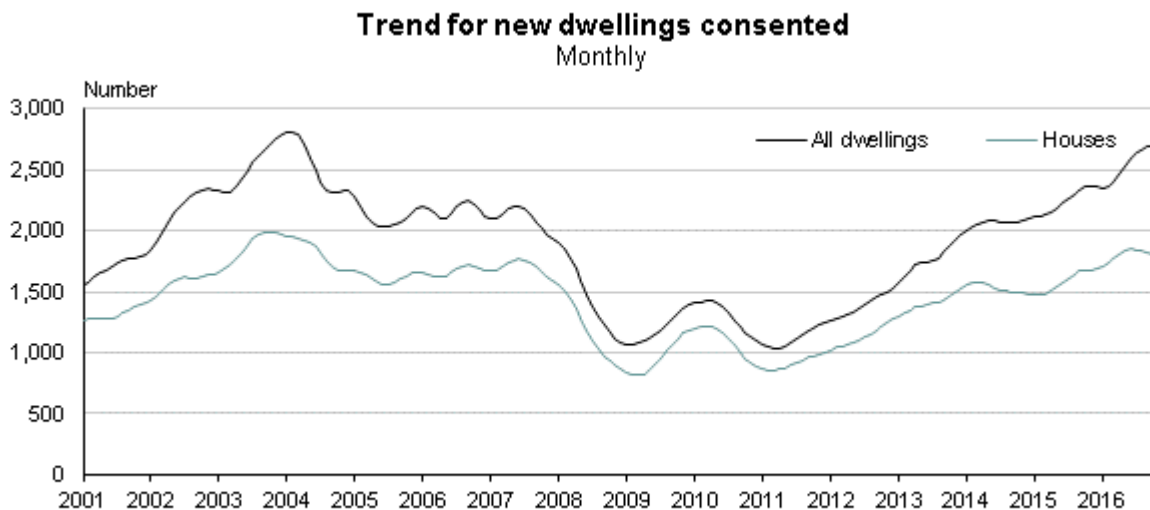
New dwellings up in October

In October 2016, a total of 2,575 new dwellings were consented:

- 1,802 houses
- 370 townhouses, flats, and units
- 229 apartments
- 174 retirement village units.

The seasonally adjusted number of new dwellings rose 2.6 percent, following recent falls. The trend is showing signs of flattening, but is at its highest level since early 2004.

For houses only, the seasonally adjusted number fell 1.3 percent, following a 2.7 percent fall in September. The trend has decreased slightly after reaching a 12-year high in mid-2016.



Source: Statistics New Zealand

New dwellings up in 12 regions

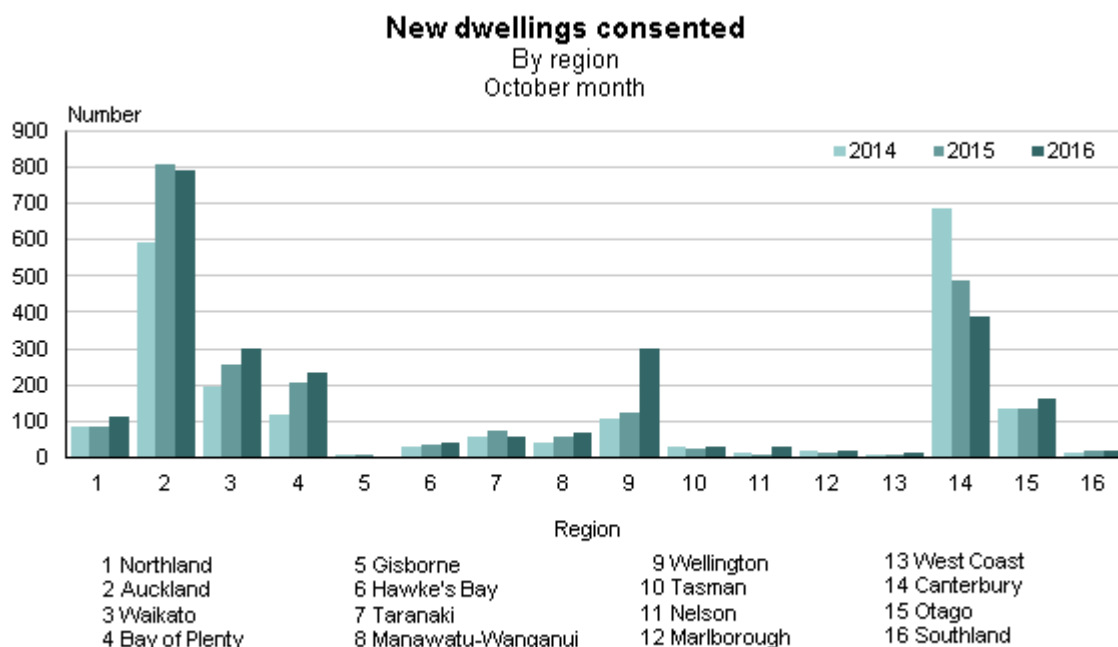
In 12 of the 16 regions, the number of new dwellings consented in October 2016 was higher than in October 2015.

The regions with the largest increases were:

- Wellington – up 177 (140 percent) to 303, boosted by two apartment projects
- Waikato – up 43 (17 percent) to 302.

The region with the largest decrease was Canterbury – down 102 (21 percent) to 387.

Nationally, 2,575 new dwellings were consented – up 226 (9.6 percent).



Source: Statistics New Zealand

In October 2016 compared with September, after removing monthly volatility, the trend for the number of new dwellings consented increased:

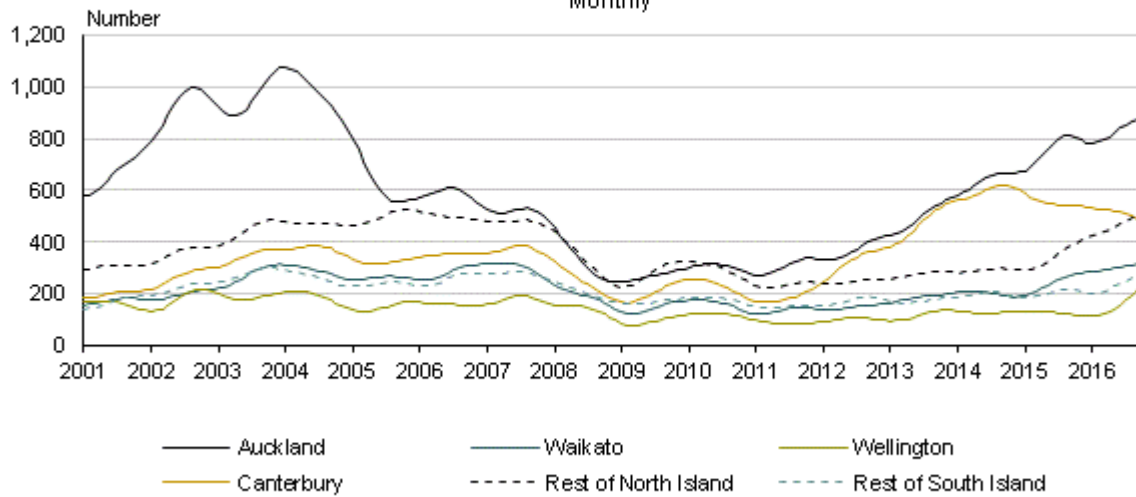
- 0.4 percent in Auckland
- 0.4 percent in Waikato
- 9.5 percent in Wellington
- 2.5 percent in the rest of the North Island.

The trend decreased 2.8 percent in Canterbury, but increased 3.6 percent in the rest of the South Island.

Note: Trend movements, particularly for recent months, may be revised when we add future months to the series.

Trend for new dwellings consented

By region
Monthly



Source: Statistics New Zealand

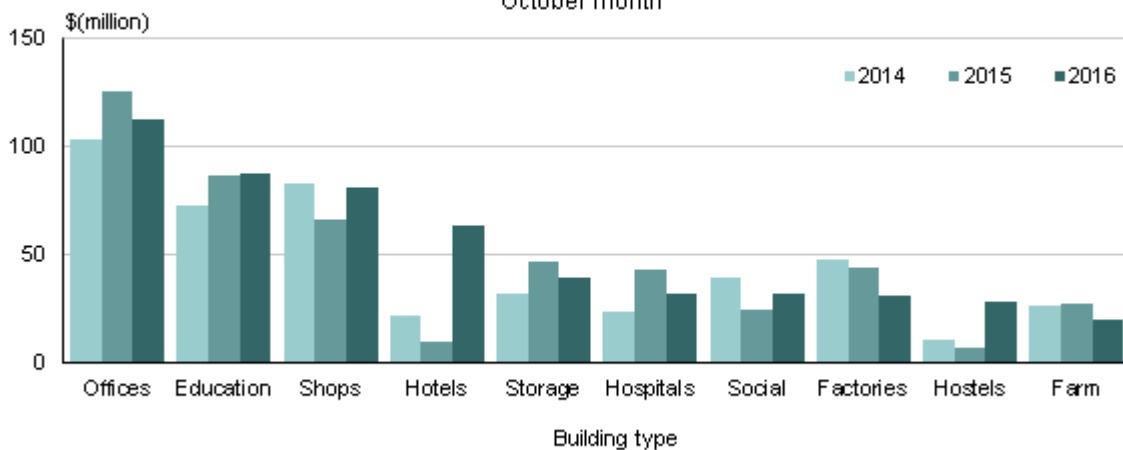
Non-residential building consents valued at \$526 million

The value of consents for non-residential buildings in October 2016 was \$526 million – up \$46 million (9.7 percent) from October 2015. The largest contributors to the latest month's value were:

- offices, administration, and public transport buildings – \$113 million
- education buildings – \$87 million
- shops, restaurants, and bars – \$81 million
- hotels, motels, and other short-term accommodation – \$64 million, boosted by a hotel in Christchurch.

Value of non-residential buildings consented

By building type (including alterations and additions)
October month



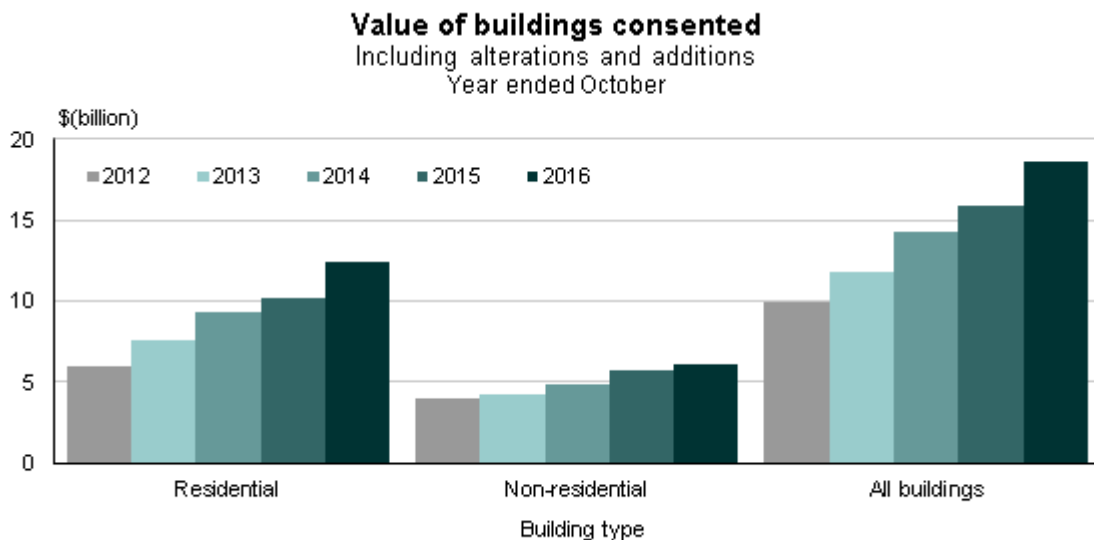
Source: Statistics New Zealand

Consents for all buildings total \$1.7 billion

The total value of building work consented in October 2016 was \$1.7 billion. This comprised \$1.1 billion of residential work, and \$526 million of non-residential work.

For the year ended October 2016, compared with the year ended October 2015, the value of buildings consented increased for:

- all buildings – up \$2.7 billion (17 percent) to \$19 billion
- residential buildings – up \$2.3 billion (23 percent) to \$12 billion
- non-residential buildings – up \$410 million (7.2 percent) to \$6.1 billion.



Source: Statistics New Zealand

Data for building consents is obtained from all territorial authorities in New Zealand.

Delay to the release

Due to the 14 November earthquake, we delayed this release from its scheduled date of 30 November 2016. The delay ensures the information is produced to its usual quality level.

Find data tables

For more detailed data, see the Excel tables in the 'Downloads' box.

Related links

- [Next release](#)
- [Past releases](#)
- [Data quality](#)
- [Related information](#)

Next release

Building Consents Issued: November 2016 – release date to be advised

[Subscribe to information releases](#), including this one, by completing the online subscription form.

[The release calendar](#) lists all information releases by date of release.

Past releases

[Building Consents Issued](#) has links to past releases.

Data quality

Building Consents Issued – DataInfo+

General methodology used to produce building consent statistics from March 2015 onwards.

Building Consents Issued concepts from March 2015 onwards – DataInfo+

Definitions of terms used in this release.

Principles and protocols for producers of Tier 1 statistics

Statistics in this release have been produced in accordance with the Official Statistics System principles and protocols for producers of Tier 1 statistics for quality. They conform to the Statistics NZ Methodological Standard for Reporting of Data Quality.

Related information

Earthquake-related building consents in Canterbury

Summarises Canterbury consents identified as earthquake-related. This table is updated monthly.

Value of Building Work Put in Place – information releases

Statistics that estimate the actual dollar value of work put in place on construction jobs within New Zealand (quarterly). It includes information by building type, and deflated values.

Copyright and terms of use

Includes our copyright, attribution, and liability statements.

Contacts

For media enquiries contact:

Neil Kelly

Christchurch 021 999 517

Email: info@stats.govt.nz

For technical information contact:

Tehseen Islam

Christchurch 021 241 7253

Email: info@stats.govt.nz

For general enquiries contact our Information Centre:

Phone: 0508 525 525 (toll-free in New Zealand)

+64 4 931 4600 (outside New Zealand)

Email: info@stats.govt.nz

Subscription service:

Subscribe to information releases, including this one, by completing the online subscription form.

Correction notifications:

Subscribe to receive an email if a correction notice is published for Building Consents Issued.

Unsubscribe to correction notifications for Building Consents Issued.

Subscribe to all to receive an email if a correction notice is published for any of our information releases.

Unsubscribe to all if you change your mind.

Tables

See the following Excel tables in the 'Downloads' box on this page. If you have problems viewing the files, see [opening files and PDFs](#).

1. Building consents issued
2. Number of new dwellings consented
3. Number and value of new dwellings consented, by region
4. Number of new dwellings consented, trend for selected regions
5. Number of new dwellings consented, by selected territorial authority and Auckland wards
6. Value of building consents issued, actual and trend values

Machine-readable zipped csv files

Machine-readable zipped csv files are also available. This is a way for technical users to download our data.

Access more data on Infoshare

Infoshare allows you to organise data in the way that best meets your needs. You can view the resulting tables onscreen or download them.

Use Infoshare

For this release, select the following category from the Infoshare homepage:

Subject category: **Industry sectors**

Group: **Building Consents - BLD**

Next release

Building Consents Issued: November 2016 – release date to be advised