

Building Consents Issued: November 2012

Embargoed until 10:45am – 09 January 2013

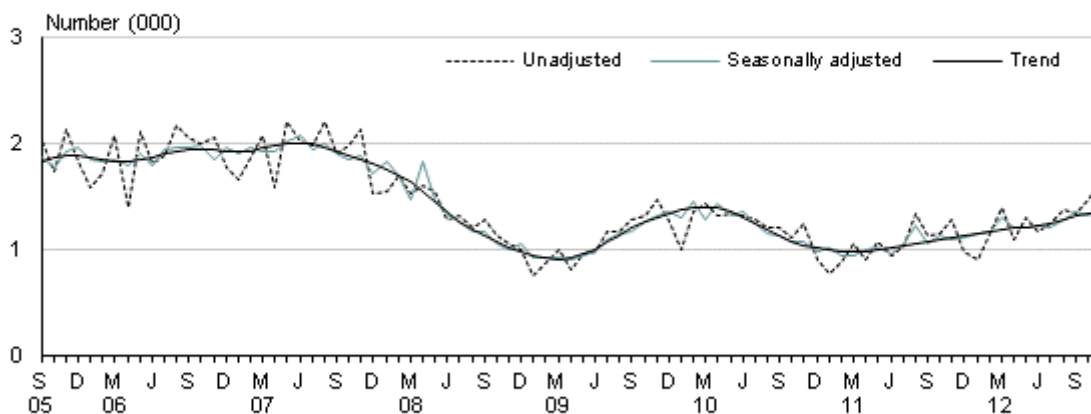
Key facts

In November 2012:

- 1,658 new dwellings were consented, including 39 apartments (all retirement village units).
- In Canterbury, 413 new dwellings were consented, the highest monthly number for over 5 years.
- The seasonally adjusted number of non-apartment dwellings increased by 4.6 percent, and that for new dwellings including apartments fell 5.4 percent. Apartment numbers can vary a lot from month to month.

In the 20 months since the latest low point in March 2011, the trend for the number of new dwellings, excluding apartments, has increased by 41 percent. The trend for new dwellings including apartments has also increased over the same period, by 45 percent.

New dwellings consented
Excluding apartments
Monthly



Commentary

- [New dwellings trend continues to grow](#)
- [Canterbury and Otago regions drive new dwellings growth](#)
- [Value of non-residential buildings steady](#)
- [Consents for 39 new earthquake-related dwellings in Canterbury](#)
- [Annual value of all buildings consented tops \\$10 billion](#)

Figures given are not adjusted for seasonal fluctuations unless otherwise stated.

New dwellings trend continues to grow

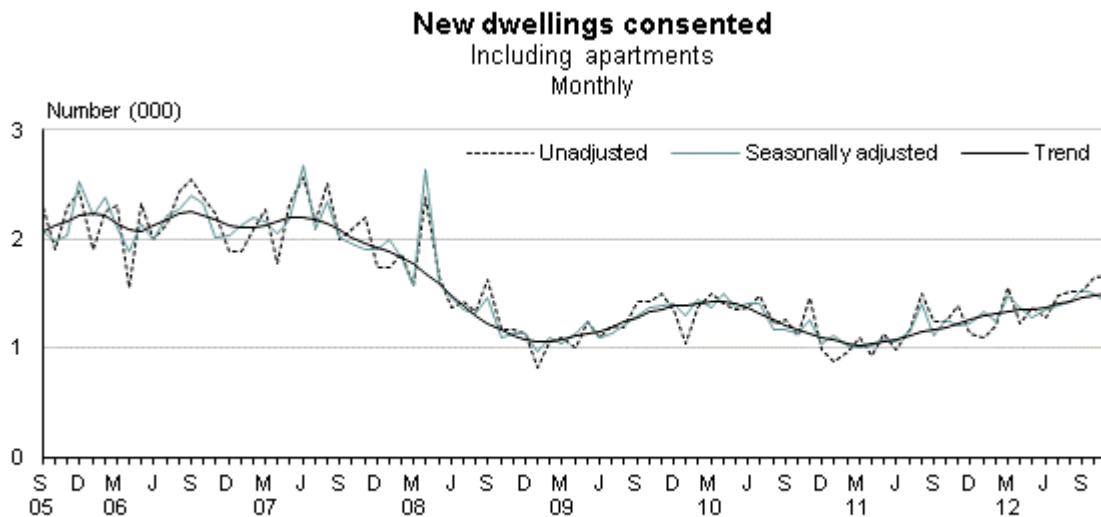
In November 2012, 1,658 new dwellings (including apartments) were consented. It was the 20th consecutive month of growth in the trend for the number of new dwellings. The trend for the number of new dwellings consented, including apartments, was 45 percent higher than the most recent low point in March 2011. The trend number excluding apartments has grown by 41 percent over the same period.

The numbers of new dwellings consented in November 2012, compared with November 2011, were:

- 1,658 new dwellings, including apartments (**up 20 percent**)
- 1,619 new dwellings, excluding apartments (**up 27 percent**) – the highest since February 2008
- 39 new apartments (**down 70** from 109).

All of the apartments were retirement village units, both this month and in November 2011.

The seasonally adjusted number of new dwellings, excluding apartments, increased by 4.6 percent in November 2012. Including apartments, the seasonally adjusted number was down 5.4 percent. Apartment numbers can vary a lot from month to month, as reflected in the graph below.

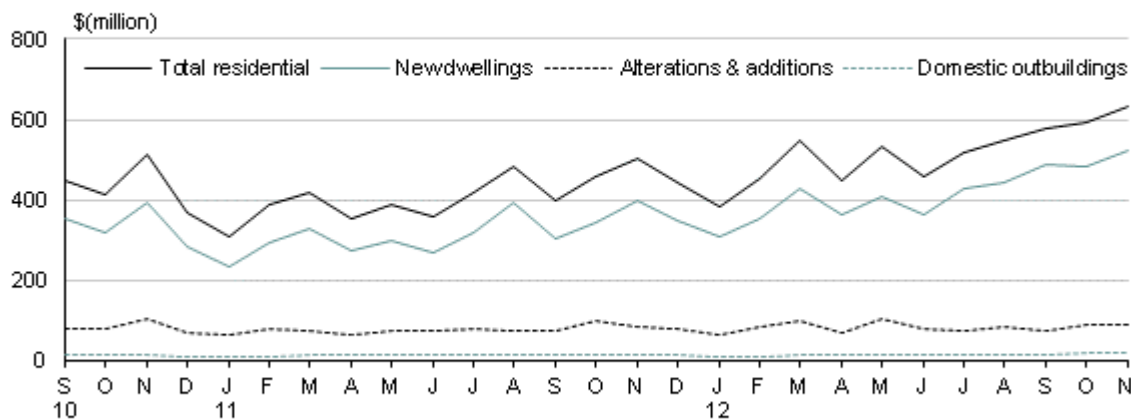


Source: Statistics New Zealand

In November 2012, the value of all residential building consents was \$633 million, 26 percent higher than in November 2011 and 23 percent higher than in November 2010. New dwellings continue to drive the value increase.

New dwellings contributed \$524 million (83 percent) of the total residential buildings value in November 2012. The remaining \$109 million (17 percent) came from alterations, additions, and other residential work.

Residential buildings consented Monthly values



Source: Statistics New Zealand

The residential buildings value trend for has been growing for 19 consecutive months, and is now 47 percent higher than the most recent low point of April 2011.

Canterbury and Otago regions drive new dwellings growth

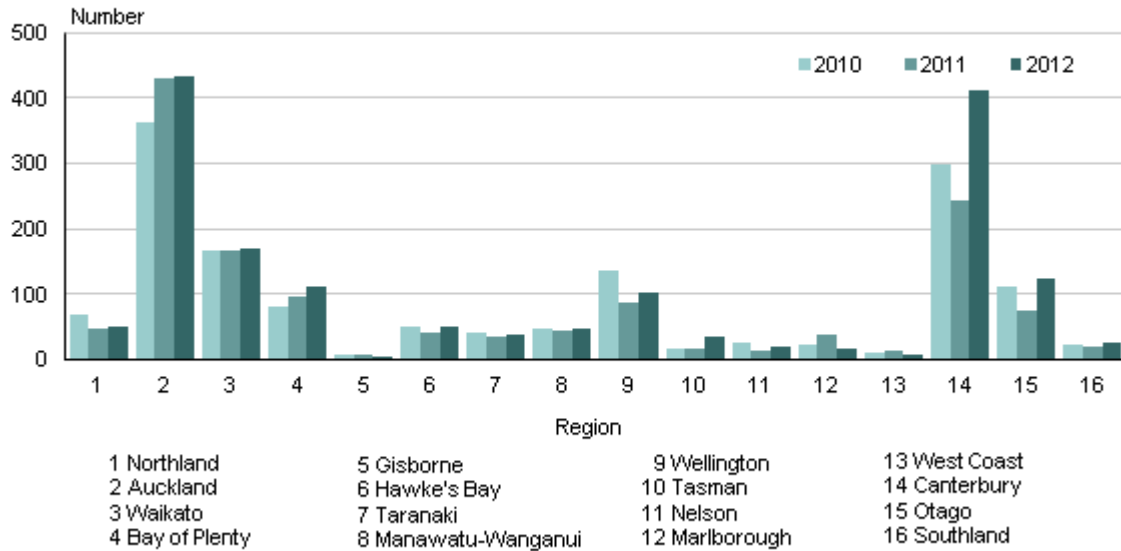
Compared with November 2011, the number of new dwellings consented in November 2012 increased most in Canterbury and Otago. The number of new dwellings rose most in:

- Canterbury, **up** 171 (71 percent) to 413, the highest for over five years
- Otago, **up** 49 (65 percent) to 124, from both Queenstown (up 26) and Dunedin (up 24)
- Tasman, **up** 19 (112 percent) to 36.

Auckland region continues to lead with the highest number of new dwellings consented, 432 this month, up just two from November 2011 but up 70 (19 percent) from November 2010.

New dwellings consented

By region
November month



Source: Statistics New Zealand

Eight of the nine North Island regions reported increased numbers of new dwellings consented in November 2012, compared with November 2011. The North Island total was up 50 (5.2 percent) to 1,010. In the South Island, five of the seven regions increased the number of new dwellings, and the South Island total was 648, up 229 (55 percent).

The numbers of new dwellings consented in Christchurch and surrounding districts were:

- Christchurch city, **up** 79 to 141
- Selwyn district, **up** 55 to 102 – the highest number for Selwyn since the series began in April 1990
- Waimakariri district, **up** 37 to 112.

In November 2012 only 39 apartments were consented. All of the apartments were retirement village units; 21 in Hawke's Bay and 18 in Canterbury.

Value of non-residential buildings steady

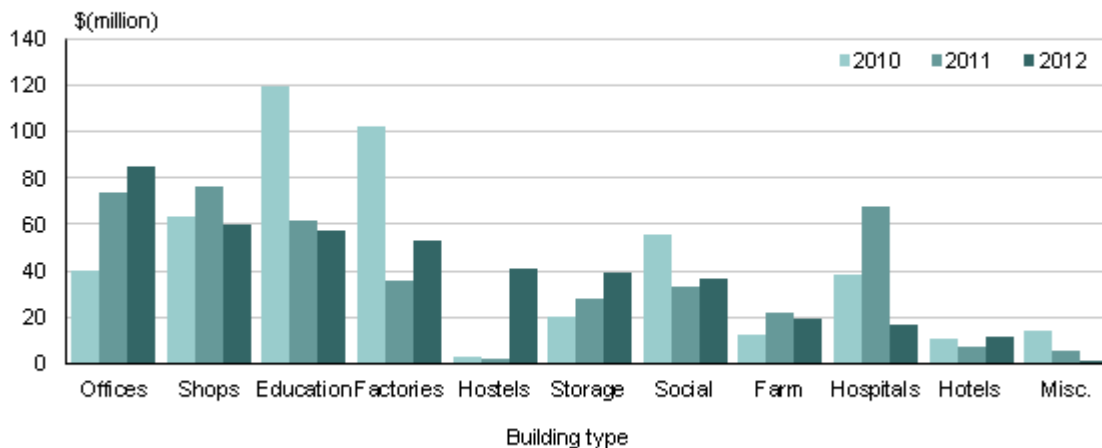
The value of non-residential building consents in November 2012 was \$420 million, up \$5 million (1.3 percent) compared with November 2011.

Six of the 11 building types increased in value. The largest increases were:

- hostels and boarding houses, **up** \$39 million – boosted by a large consent for a men's prison in Manukau city
- factories and industrial buildings, **up** \$17 million (46 percent)
- storage buildings, **up** \$11 million (41 percent).

Value of non-residential buildings consented

By building type (including alterations and additions)
November month



Source: Statistics New Zealand

As shown by the darkest bars in the graph above, the three largest contributors to the value of non-residential buildings in November 2012 were:

- offices and administration buildings, at 20 percent
- shops, restaurants, and taverns, at 14 percent
- education buildings, at 14 percent.

Two regions contributed 65 percent of the value of non-residential building work in November 2012, Auckland with \$149 million (36 percent), and Canterbury with \$125 million (30 percent).

The value of consents for non-residential building work in the three next largest regions in November 2012 was:

- Wellington – \$40 million
- Waikato – \$19 million
- Otago – \$19 million.

Consents for 39 new earthquake-related dwellings in Canterbury

Canterbury consents identified as being earthquake-related totalled \$59 million in November 2012. So far this year, the monthly value has ranged from \$25 million to \$59 million.

Of the \$59 million recorded for November, \$25 million was for residential buildings, including 39 new dwellings. A further \$33 million was for non-residential building work. See also [Earthquake-related building consents in Canterbury](#).

Since 4 September 2010, almost 3,400 earthquake-related consents have been identified in Canterbury, totalling \$749 million. This includes 565 new dwellings, of which 149 were relocatable units. Also included are alterations and additions for residential buildings, non-residential buildings, and non-building construction.

Building consents are often used as an early indicator of building activity, as measured by Statistics NZ's quarterly [Value of Building Work Put in Place](#). In the September 2012 quarter

there were strong increases in both residential and non-residential building activity in Canterbury. This follows a strong increase in earthquake-related residential building activity in the previous quarter.

Value of Building Work Put in Place: December 2012 quarter will be published on 6 March 2013.

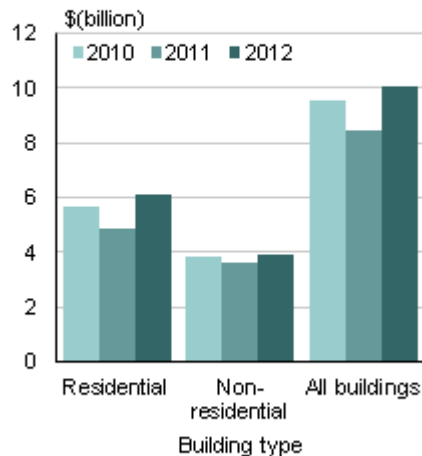
Annual value of all buildings consented tops \$10 billion

The value of all buildings consented for the year ended November 2012 was \$10,030 million, 18 percent higher than the November 2011 year.

For the year ended November 2012, compared with the year ended November 2011, the value of consents increased for:

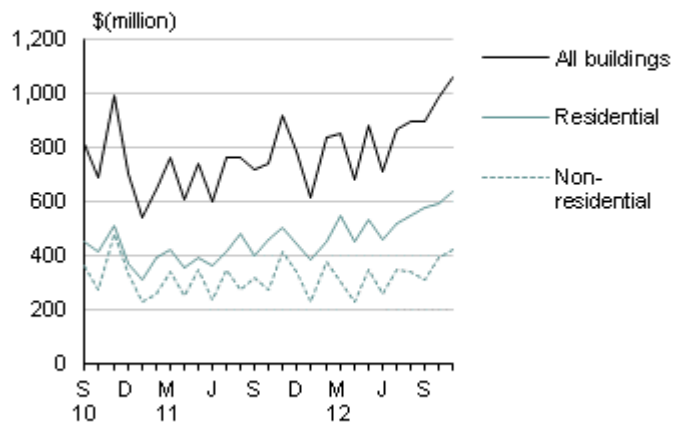
- all buildings, **up** \$1,546 million (18 percent) to \$10,030 million
- residential buildings, **up** \$1,283 million (26 percent) to \$6,133 million
- non-residential buildings, **up** \$263 million (7.2 percent) to \$3,897 million.

Value of buildings consented
Including alterations and additions
Year ended November



Source: Statistics New Zealand

Value of buildings consented
Including alterations and additions
Monthly



Source: Statistics New Zealand

In November 2012, the value of consents for all buildings (both residential and non-residential) was \$1,053 million, up 15 percent compared with November 2011. Residential buildings contributed \$129 million of the \$134 million increase. The trend for the value of all buildings has been growing for 18 months.

For more detailed data, see the Excel tables in the 'Downloads' box.

Definitions

About Building Consents Issued

Building Consents Issued contains statistics on the number, value, and floor areas of residential dwellings and the value of non-residential buildings by region and building type. Values include goods and services tax and are not inflation adjusted. Buildings are classified according to their main intended function or functions. Subsequent changes in function will be recorded in the statistics if new consents are issued.

More definitions

Domestic outbuildings: includes new construction, alterations, and additions to garages, glasshouses, and sheds on residential sections.

Residential buildings: includes new construction, alterations, and additions to dwellings (houses, flats, and apartments) and domestic outbuildings.

Non-residential buildings: includes new construction, alterations, and additions to industrial, commercial, and other non-residential buildings such as schools, hospitals, and libraries. Barracks, hostels, prisons, serviced apartments, workers' quarters, and other accommodation buildings are included.

Territorial authorities: are defined under the Local Government Act 2002 and related amendments. There are 67 territorial authorities, comprising 13 cities, 53 districts, and 1 territory.

Related links

Upcoming releases

Building Consents Issued: December 2012 will be released on 30 January 2013.

[Subscribe to information releases](#), including this one, by completing the online subscription form.

[The release calendar](#) lists all our upcoming information releases by date of release.

Past releases

[Building Consents Issued](#) has links to past releases.

Related information

[Earthquake-related building consents](#) summarises Canterbury consents identified as earthquake-related. This table is updated monthly.

[Value of building work put in place](#) statistics estimate the actual dollar value of work put in place on construction jobs within New Zealand (quarterly). It includes information by building type, and deflated values.

Data quality

This section contains information that does not change between releases.

- [Data source](#)
- [Survey errors](#)
- [Coverage](#)
- [Interpreting the data](#)
- [More information](#)

Data source

Data for building consents is obtained each month from all accredited building consent authorities (ie territorial authorities). Statistics NZ compiles information from all building consents issued each month if:

- they are valued at \$5,000 or more
- they are not predominantly for demolition work.

Survey errors

Sample errors

Because the survey has 100 percent coverage of the target population, there is no sample error.

Non-sample errors

These errors can occur when there is incomplete or incorrect information on consent forms, or when information is incorrectly delivered, interpreted, or classified. While much effort is made to minimise these errors, they will still occur, and it is not possible to quantify their effect.

Coverage

Scope

Only construction work that requires a building consent is included in these statistics. Some civil engineering works, such as roads, require resource consents but not building consents, so are excluded.

The scope of work requiring a building consent is determined by the Building Act 2004. Its main parts came into force in 2005, replacing the Building Act 2001. The new act introduced measures to provide greater assurances to consumers, such as registration of building consent authorities, and the licensing of building practitioners. The act was reviewed in 2009. The review broadened the scope of work that may proceed without a building consent (see [Schedule 1 exemptions](#) for changes to the Building Act 2004, on the Department of Building and Housing's website, effective from 23 December 2010).

The [Canterbury Earthquake Recovery Authority](#) has legislative powers to undertake work without a building consent. For example, demolition work and temporary repairs.

Statistics NZ excludes consents that are predominantly for demolition work, and consents valued below \$5,000.

Changes in coverage

The building consents included in this release have changed over time. The list below highlights the key changes.

1996 From the June 1996 month, consent values for multi-purpose buildings are coded to one or more of the most appropriate building types. Before this date, multi-purpose buildings were classified separately.

1993 From the January 1993 month, building authorisations have been applied for under the building consents system administered by territorial authorities. Before this date, applications were made under the building permits system. The building consents system has wider coverage than the building permits system. The additional coverage includes some government building (particularly work on education buildings), and on-site drainage and reticulation work.

1989 From the September 1989 month, consents below \$5,000 are excluded.

Boundary changes

2011 From 1 November 2010, part of the former Franklin district moved from the Auckland region to the Waikato region. This change is included in building consents data from January 2011.

2010 On 1 November 2010, the new Auckland Council came into being (see table 4). Before November 2010, the Auckland region (see table 3) can be used to approximate the new Auckland Council.

Seasonally adjusted series

Seasonal adjustment removes the estimated impact of regular seasonal events, such as summer holidays and pre-Christmas purchasing, from statistical series. This makes figures for adjacent periods more comparable.

The seasonally adjusted series are re-estimated monthly when each new month's data becomes available. Figures are therefore subject to revision, with the largest changes normally occurring in the latest months.

The X-12-ARIMA seasonal adjustment program, developed at the U.S. Census Bureau, is used to produce the seasonally adjusted and trend estimates.

Trend estimates

Trend estimation removes the estimated impact of regular seasonal events and irregular short-term variation from statistical series. This reveals turning points and the underlying direction of movement over time.

The trend series are re-estimated monthly when each new month's data becomes available. Figures are therefore subject to revision, with the largest changes normally occurring in the latest months. Revisions can be large if values are initially treated as outliers but are later found to be part of the underlying trend.

The X-12-ARIMA seasonal adjustment program is used to produce the seasonally adjusted and trend estimates. Irregular short-term variation is removed by smoothing the seasonally adjusted series using optimal weighted moving averages.

To reduce distortions, the monthly trend series for the value of non-residential buildings is estimated after removal of consent values of \$25 million or more between January 1990 and December 2005, and of \$50 million or more from January 2006. However, non-residential building consent values are still volatile with no stable seasonal pattern, and therefore a stable trend for this series is slow to emerge.

See [Seasonal adjustment in Statistics New Zealand](#) for more information.

Interpreting the data

Figures for new apartments are compiled from consents that have 10 or more new attached dwelling units (flats or apartments). If there are fewer than 10 flats or apartments on a consent, they are treated as being dwellings other than apartments. Apartment numbers often show large fluctuations from month to month and, unless removed from dwelling figures, can mask underlying movements.

Values for new buildings include conversion costs. For example, if a hotel is converted to apartments, these are treated as new dwellings in the statistics. Consent values for new buildings sometimes include the cost of demolishing or removing the previous buildings.

Some consents, particularly for large projects, are issued in stages across more than one month. Value data is collected at each stage but floor areas and dwelling or building counts are normally recorded at the first large stage of the project. This difference in timing can affect calculations of average prices.

Trading day adjustments

An aim of time series analysis is to identify movements that are due to actual changes. Seasonal adjustment is done to remove systematic calendar-related variation. Specific adjustments can be made to remove variations due to trading day differences and moving holidays, such as Easter, which are not accounted for in a standard seasonal adjustment.

Some of the apparent movement in building consent figures is due to trading day differences between months. For example, a month with four weekends will have more trading or working days than a comparable month with five weekends. This can affect monthly figures, even though there may be no difference in the length of the month or difference in the rate at which consents are issued. Trading day effects, when estimated to be statistically significant, are quantified and removed. This is trading day adjustment.

Since 1998, trading day adjustments have been made to the building consents series during the seasonal adjustment process. Since May 2004, an improved method has been used. At present, there is no adjustment to remove the effect of moving holidays such as Easter.

Trend estimates versus month-on-month comparisons

Trend estimates reveal the underlying direction of movement in statistical series. In contrast, comparisons of unadjusted data between one month and the same month in the previous year/s do not take account of data recorded for the intervening months, and are subject to one-off fluctuations. Reasons for fluctuations include changes in legislation, economic variables such as interest rates, and trading day composition of months.

More information

See more [information about Building Consents Issued](#).

Liability

While all care and diligence has been used in processing, analysing, and extracting data and information in this publication, Statistics NZ gives no warranty it is error-free and will not be liable for any loss or damage suffered by the use directly, or indirectly, of the information in this publication.

Timing

Our information releases are delivered electronically by third parties. Delivery may be delayed by circumstances outside our control. Statistics NZ accepts no responsibility for any such delay.

Crown copyright©



This work is licensed under the [Creative Commons Attribution 3.0 New Zealand](#) licence. You are free to copy, distribute, and adapt the work, as long as you attribute the work to Statistics NZ and abide by the other licence terms. Please note you may not use any departmental or governmental emblem, logo, or coat of arms in any way that infringes any provision of the [Flags, Emblems, and Names Protection Act 1981](#). Use the wording 'Statistics New Zealand' in your attribution, not the Statistics NZ logo.

Contacts

For media enquiries contact:

Blair Cardno

Christchurch 03 964 8700

Email: info@stats.govt.nz

For technical information contact:

Danielle Barwick or Clara Eatherley

Christchurch 03 964 8700

Email: info@stats.govt.nz

For general enquiries contact our Information Centre:

Phone: 0508 525 525 (toll-free in New Zealand)

+64 4 931 4600 (outside New Zealand)

Email: info@stats.govt.nz

Subscription service:

Subscribe to information releases, including this one, by completing the online subscription form.

Correction notifications:

Subscribe to receive an email if a correction notice is published for Building Consents Issued.

Unsubscribe to correction notifications for Building Consents Issued.

Subscribe to all to receive an email if a correction notice is published for any of our information releases.

Unsubscribe to all if you change your mind.

Tables

The following tables are available in Excel format from the 'Downloads' box. If you have problems viewing the files, see [opening files and PDFs](#).

1. Building consents issued – November
2. Number of new dwellings consented
3. Number and value of new dwellings consented, by region
4. Number of new dwellings consented, by selected territorial authority area
5. Value of building consents issued, unadjusted and trend values

Access more data on Infoshare

Use [Infoshare](#) to access time-series data specific to your needs. For this release, select the following category from the Infoshare homepage:

Subject category: **Industry sectors**

Group: **Building Consents - BLD**