

Building Consents Issued: January 2017

Embargoed until 10:45am – 06 March 2017

Key facts

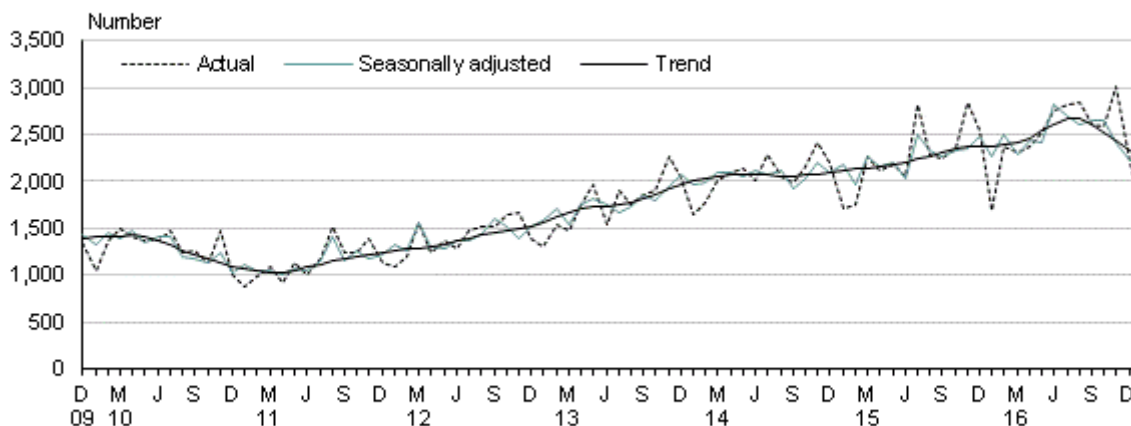
In January 2017, building consents were issued for 1,752 new dwellings:

- 1,253 houses
- 285 townhouses, flats, and units
- 116 apartments
- 98 retirement village units.

The seasonally adjusted number of new dwellings consented rose 0.8 percent in January, following falls of 7.9 percent in December and 8.9 percent in November. The trend reached a 12-year high in August 2016, but has decreased 15 percent since then.

In the year ended January 2017, 30,123 new dwellings were consented – up 11 percent from the January 2016 year.

New dwellings consented
Monthly



Source: Statistics New Zealand

Including alterations, the value of building work consented in the January 2017 month was \$1.1 billion, comprising \$748 million of residential work and \$338 million of non-residential work.

Liz MacPherson, Government Statistician
ISSN 1178-0231
6 March 2017

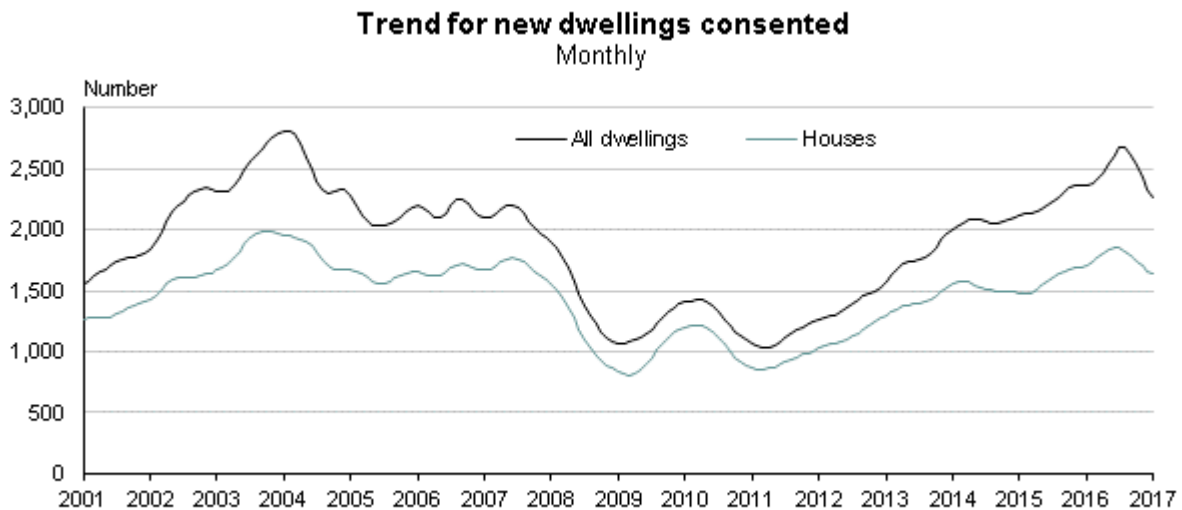
Commentary

- [Dwellings trend continues to decrease](#)
- [New dwellings up slightly in January](#)
- [Over 30,000 new dwellings consented annually](#)
- [Consents for all buildings total \\$1.1 billion in January](#)
- [Find data tables](#)

Figures given are not adjusted for seasonal fluctuations unless otherwise stated. Values include GST and are not adjusted for inflation.

Dwellings trend continues to decrease

The trend for the number of new dwellings consented has fallen 15 percent since August 2016, when it reached a 12-year high.



Source: Statistics New Zealand

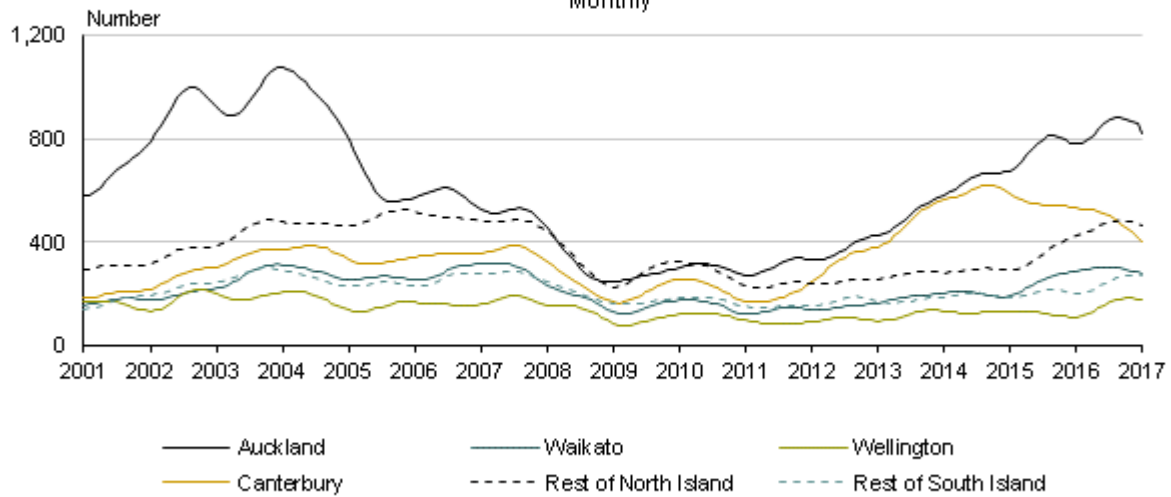
The trends for all six regional areas are showing signs of easing or decreasing.

However, these regional trends are quite volatile, and are revised each month. Most regional areas are still near their highest level since before the global financial crisis in 2008.

In Canterbury, the trend has fallen 36 percent since the series peak in late 2014 as the post-earthquake residential rebuild slowly winds down. However, the trend is still at a historically high level.

Trend for new dwellings consented

By region
Monthly



Source: Statistics New Zealand

New dwellings up slightly in January

The seasonally adjusted number of new dwellings consented rose 0.8 percent in January 2017. A 5.0 percent decrease for houses was offset by strength for apartments and townhouses (which are not seasonally adjusted).

However, this small rise followed large falls of 7.9 percent in December and 8.9 percent in November.

In actual terms, 1,752 new dwellings were consented in January 2017 (up 3.4 percent from January 2016):

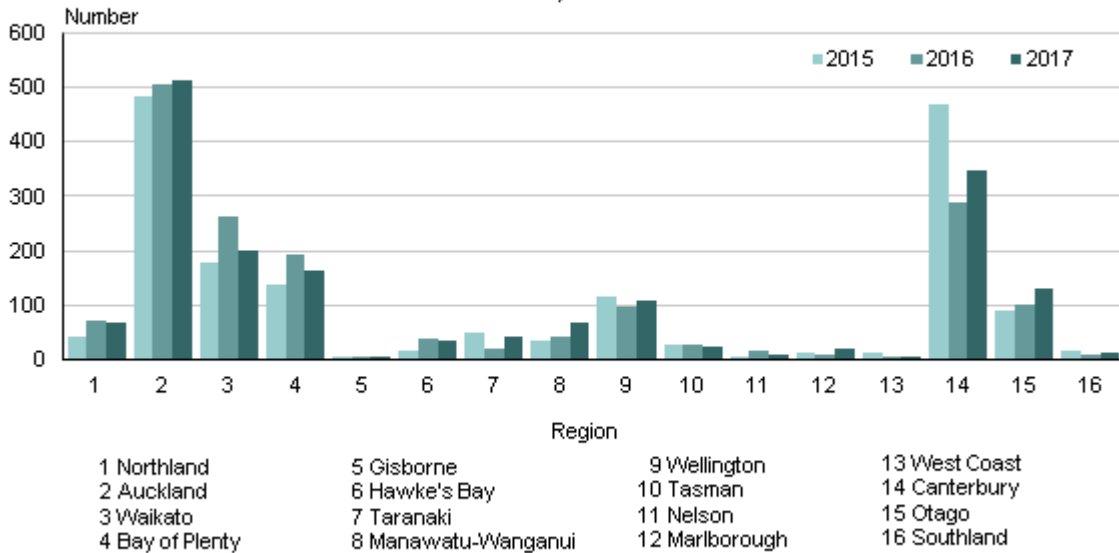
- 1,253 houses
- 285 townhouses, flats, and units
- 116 apartments
- 98 retirement village units.

The regions consenting the most new dwellings were:

- Auckland – 512 (up 1.2 percent from January 2016)
- Canterbury – 348 (up 20 percent)
- Waikato – 201 (down 23 percent).

New dwellings consented

By region
January month



Source: Statistics New Zealand

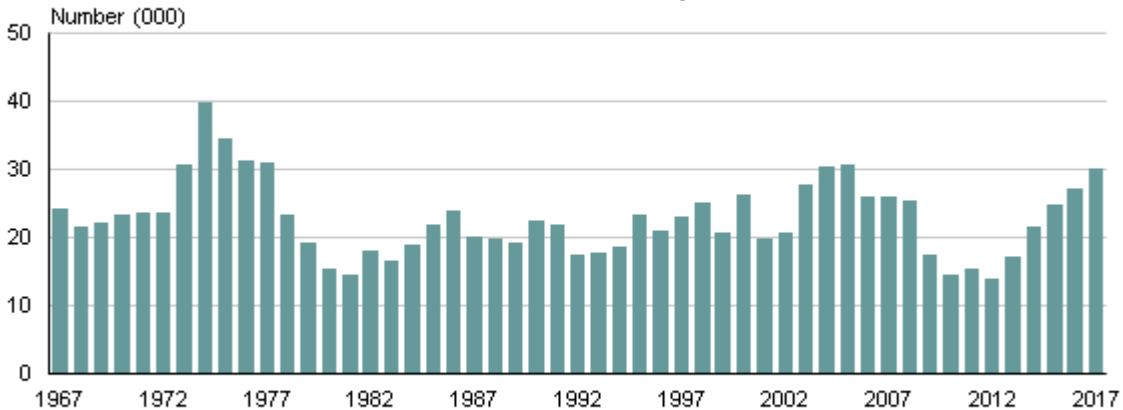
Over 30,000 new dwellings consented annually

In the year ended January 2017, 30,123 new dwellings were consented – the most for a January year since 2005. However, this is still well below the all-time high of 40,004 new dwellings consented in the year ended January 1974.

In the January 2017 year, Auckland consented 10,032 new dwellings – also the most for a January year since 2005.

New dwellings consented

Year ended January



Source: Statistics New Zealand

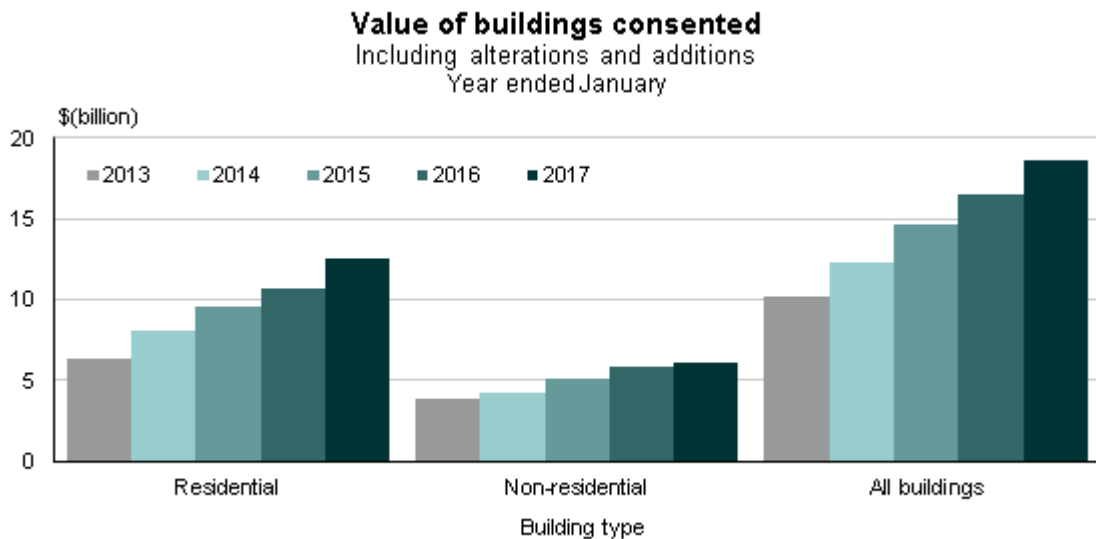
Consents for all buildings total \$1.1 billion in January

Including alterations, consents for all buildings totalled \$1.1 billion in January 2017:

- \$748 million for residential buildings
- \$338 million for non-residential buildings.

In the year ended January 2017, consents for all buildings totalled \$18.6 billion (up 12 percent from the January 2016 year):

- \$12.5 billion for residential buildings (up 18 percent)
- \$6.0 billion for non-residential buildings (up 2.9 percent).



Source: Statistics New Zealand

Find data tables

For more detailed data, see the Excel tables in the 'Downloads' box.

Related links

- [Next release](#)
- [Past releases](#)
- [Data quality](#)
- [Related information](#)

Next release

Building Consents Issued: February 2017 will be released on 31 March 2017.

[Subscribe to information releases](#), including this one, by completing the online subscription form.

[The release calendar](#) lists all information releases by date of release.

Past releases

[Building Consents Issued](#) has links to past releases.

Data quality

Building Consents Issued – DataInfo+

General methodology used to produce building consent statistics from March 2015 onwards.

Building Consents Issued concepts from March 2015 onwards – DataInfo+

Definitions of terms used in this release.

Principles and protocols for producers of Tier 1 statistics

Statistics in this release have been produced in accordance with the Official Statistics System principles and protocols for producers of Tier 1 statistics for quality. They conform to the Statistics NZ Methodological Standard for Reporting of Data Quality.

Related information

Earthquake-related building consents in Canterbury

Summarises Canterbury consents identified as earthquake-related. This table is updated monthly.

Value of Building Work Put in Place – information releases

Statistics that estimate the actual dollar value of work put in place on construction jobs within New Zealand (quarterly). It includes information by building type, and deflated values.

Copyright and terms of use

Includes our copyright, attribution, and liability statements.

Revisions

Due to improved information, we have revised the number and floor area of apartments consented in September and November 2016. The main changes are shown below. We apologise for any inconvenience caused.

Period	Series reference	Description	Original figure	Revised figure
Sep 2016	BLDM.SFTZ1121A1A	Number of new apartments (NZ)	206	270
	BLDM.SFTZ1100A1A	Number of new dwellings (NZ)	2,550	2,614
	BLDM.SFTZ1100A3A	Floor area of new dwellings (NZ)	469,446 m ²	476,746 m ²
	BLDM.SF021100A1A	Number of new dwellings (Auckland)	752	816
	BLDM.SG076021100A1	Number of new dwellings (Albany ward)	206	270
Nov 2016	BLDM.SFTZ1121A1A	Number of new apartments (NZ)	375	407
	BLDM.SFTZ1100A1A	Number of new dwellings (NZ)	2,973	3,005
	BLDM.SFTZ1100A3A	Floor area of new dwellings (NZ)	505,267 m ²	508,967 m ²
	BLDM.SF021100A1A	Number of new dwellings (Auckland)	1,156	1,188
	BLDM.SG076021100A1	Number of new dwellings (Albany ward)	254	286
2016 year	BLDA.SFTZ1121A1A12	Number of new apartments (NZ)	2,307	2,403
	BLDA.SFTZ1100A1A12	Number of new dwellings (NZ)	29,970	30,066
	BLDA.SFTZ1100A3A12	Floor area of new dwellings (NZ)	5,459,390 m ²	5,470,390 m ²
	BLDA.SF021100A1A12	Number of new dwellings (Auckland)	9,930	10,026

Contacts

For media enquiries contact:

Neil Kelly

Christchurch 03 964 8957

Email: info@stats.govt.nz

For technical information contact:

Mark Darbyshire or Danielle Barwick

Christchurch 03 964 8302 or 03 964 8918

Email: info@stats.govt.nz

For general enquiries contact our Information Centre:

Phone: 0508 525 525 (toll-free in New Zealand)

+64 4 931 4600 (outside New Zealand)

Email: info@stats.govt.nz

Subscription service:

Subscribe to information releases, including this one, by completing the online subscription form.

Correction notifications:

Subscribe to receive an email if a correction notice is published for Building Consents Issued.

Unsubscribe to correction notifications for Building Consents Issued.

Subscribe to all to receive an email if a correction notice is published for any of our information releases.

Unsubscribe to all if you change your mind.

Tables

See the following Excel tables in the 'Downloads' box on this page. If you have problems viewing the files, see [opening files and PDFs](#).

1. Building consents issued
2. Number of new dwellings consented
3. Number and value of new dwellings consented, by region
4. Number of new dwellings consented, trend for selected regions
5. Number of new dwellings consented, by selected territorial authority and Auckland wards
6. Value of building consents issued, actual and trend values

Machine-readable zipped csv files

Machine-readable zipped csv files are also available. This is a way for technical users to download our data.

Access more data on Infoshare

Infoshare allows you to organise data in the way that best meets your needs. You can view the resulting tables onscreen or download them.

Use Infoshare

For this release, select the following category from the Infoshare homepage:

Subject category: **Industry sectors**

Group: **Building Consents - BLD**

Next release

Building Consents Issued: February 2017 will be released on 31 March 2017.