

Building Consents Issued: December 2016

Embargoed until 10:45am – 09 February 2017

Key facts

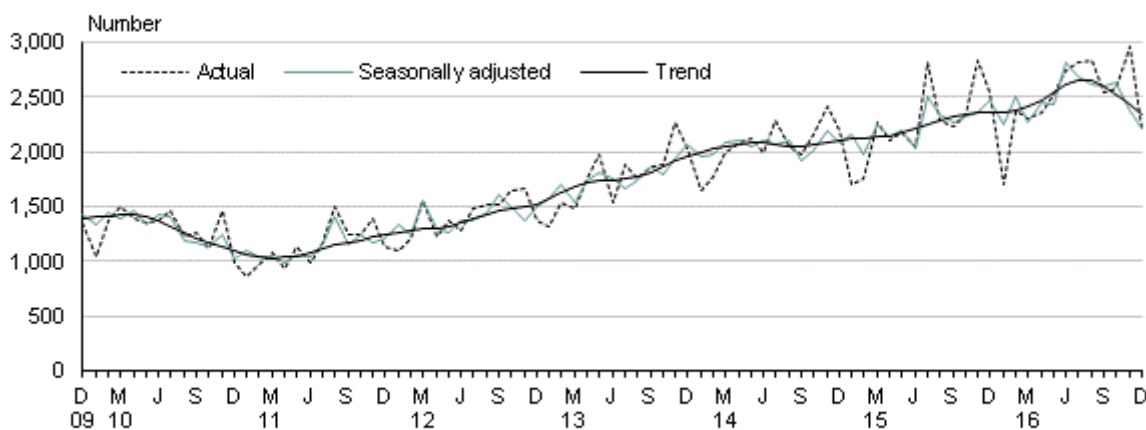
In December 2016, building consents were issued for 2,205 new dwellings:

- 1,580 houses
- 294 townhouses, flats, and units
- 193 retirement village units
- 138 apartments.

The seasonally adjusted number of new dwellings consented fell 7.2 percent in December, following a 9.6 percent fall in November. The trend reached a 12-year high in July 2016, but has decreased 12 percent since then. Canterbury is the main driver of the decreasing trend.

In the year ended December 2016, 29,970 new dwellings were consented – up 10 percent from 2015.

New dwellings consented
Monthly



Source: Statistics New Zealand

Including alterations, the value of building work consented in the December 2016 month was \$1.6 billion, comprising \$989 million of residential work and \$595 million of non-residential work.

Liz MacPherson, Government Statistician
ISSN 1178-0231
9 February 2017

Commentary

- [New dwellings down in December month](#)
- [New dwellings up in 2016](#)
- [Non-residential value increases slightly in 2016](#)
- [Consents for all buildings total \\$18.6 billion in 2016](#)
- [Kaikoura earthquake](#)
- [Find data tables](#)

Figures given are not adjusted for seasonal fluctuations unless otherwise stated. Values include GST and are not adjusted for inflation.

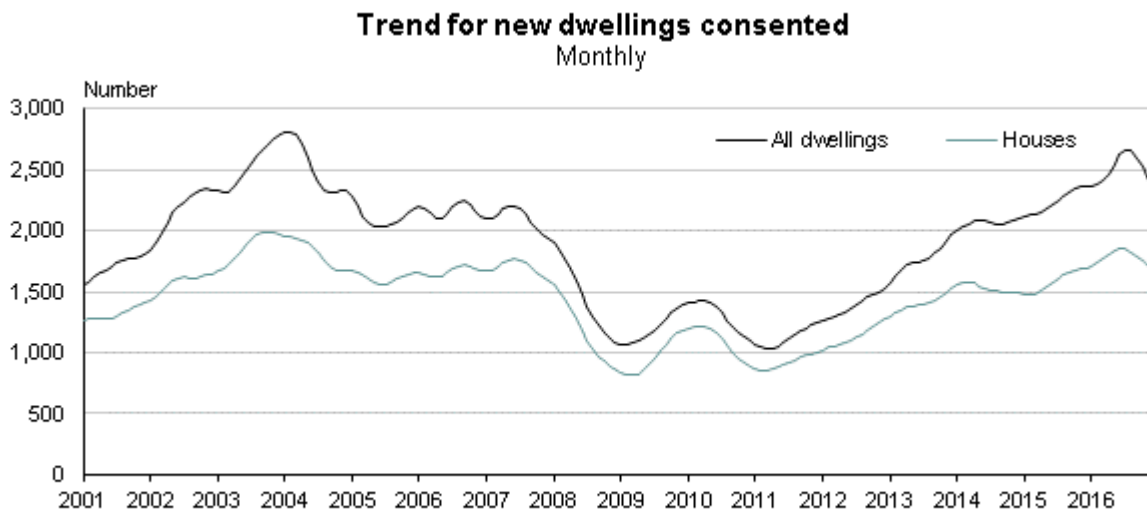
New dwellings down in December month

In December 2016, building consents were issued for 2,205 new dwellings:

- 1,580 houses
- 294 townhouses, flats, and units
- 193 retirement village units
- 138 apartments.

The seasonally adjusted number of new dwellings consented fell 7.2 percent in December, following a 9.6 percent fall in November. The trend reached a 12-year high in July 2016, but has decreased 12 percent since then.

For houses only, the seasonally adjusted number rose 3.5 percent, following a 7.7 percent fall in November. The trend is decreasing.



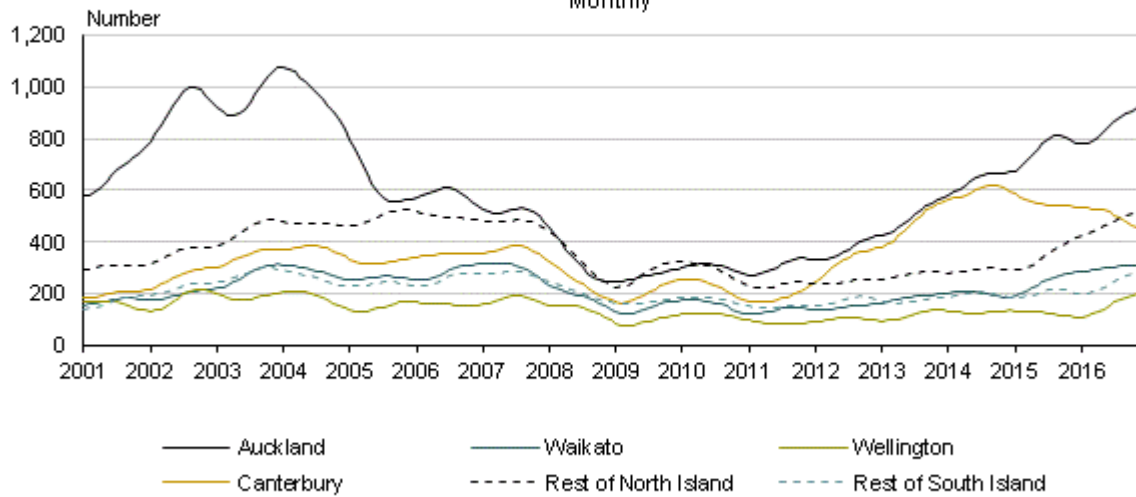
Source: Statistics New Zealand

Canterbury is the main driver of the decreasing trend. Trends in most other regional areas are increasing, but their rates of growth have slowed.

Note: Trend movements, particularly for recent months, may be revised when we add future months to the series.

Trend for new dwellings consented

By region
Monthly

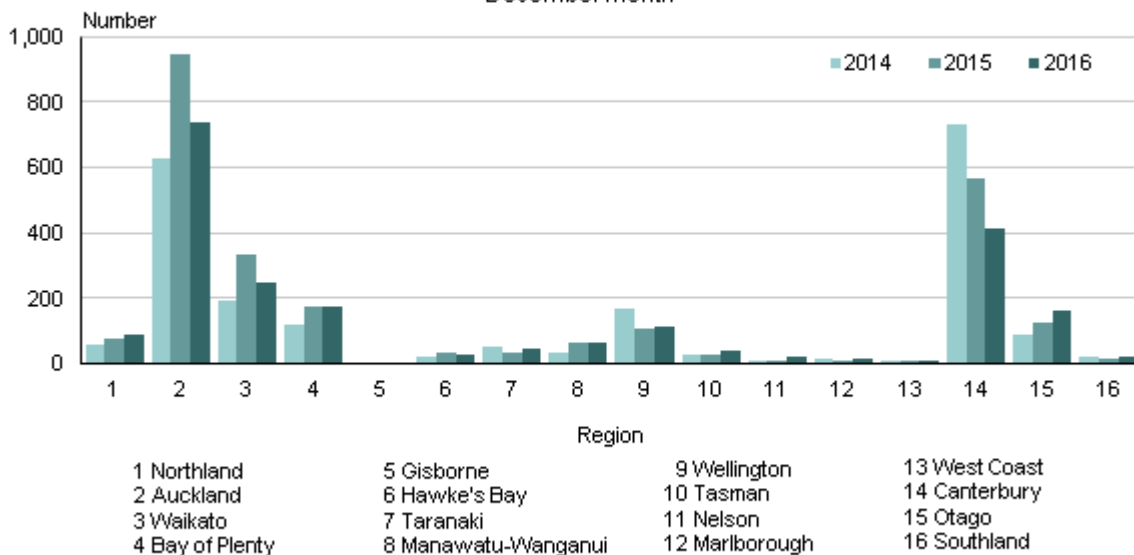


Source: Statistics New Zealand

In actual terms, the number of dwellings consented in December 2016 was lower than in December 2015 (down 13 percent). This decrease was driven by Auckland, Canterbury, and Waikato, and was mainly due to a fall in the volatile apartments category. The Canterbury and Waikato falls were also driven by houses.

New dwellings consented

By region
December month



Source: Statistics New Zealand

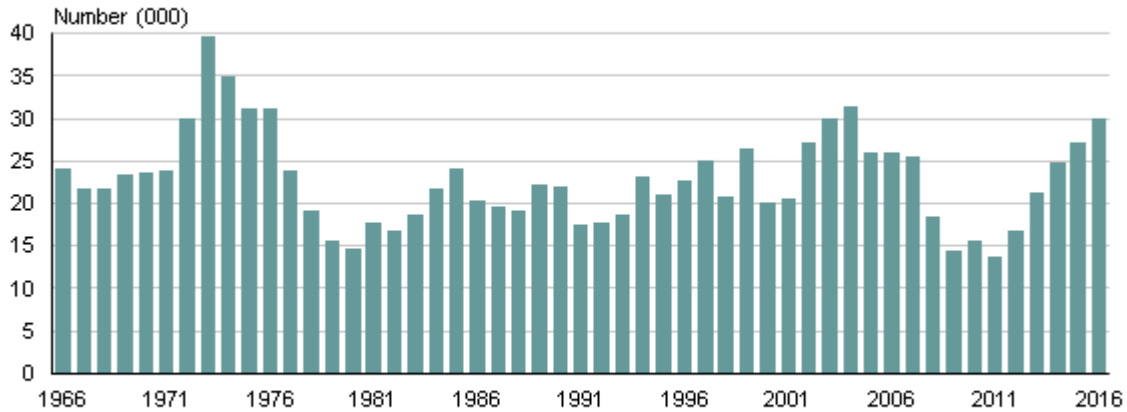
New dwellings up in 2016

In 2016, 29,970 new dwellings were consented (up 10 percent from 2015):

- 21,310 houses (up 12 percent)

- 4,401 townhouses, flats, and units (up 20 percent)
- 2,307 apartments (down 9.1 percent)
- 1,952 retirement village units (up 2.8 percent).

New dwellings consented
Year ended December

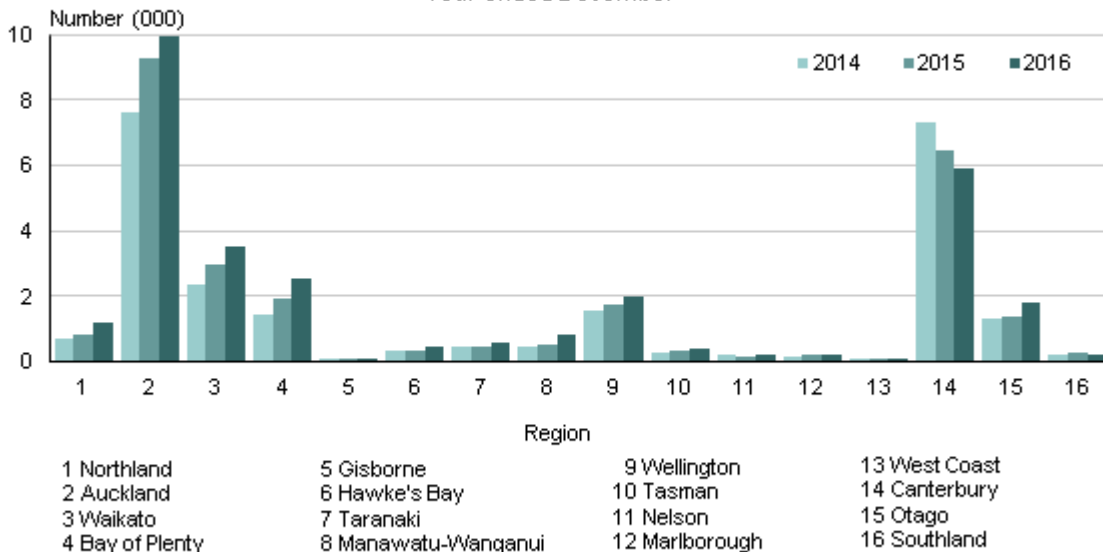


Source: Statistics New Zealand

The regions with the most new dwellings consented in 2016 were:

- Auckland – 9,930 (up 7.3 percent from 2015)
- Canterbury – 5,903 (down 9.0 percent)
- Waikato – 3,552 (up 18 percent)
- Bay of Plenty – 2,520 (up 33 percent).

New dwellings consented
By region
Year ended December



Source: Statistics New Zealand

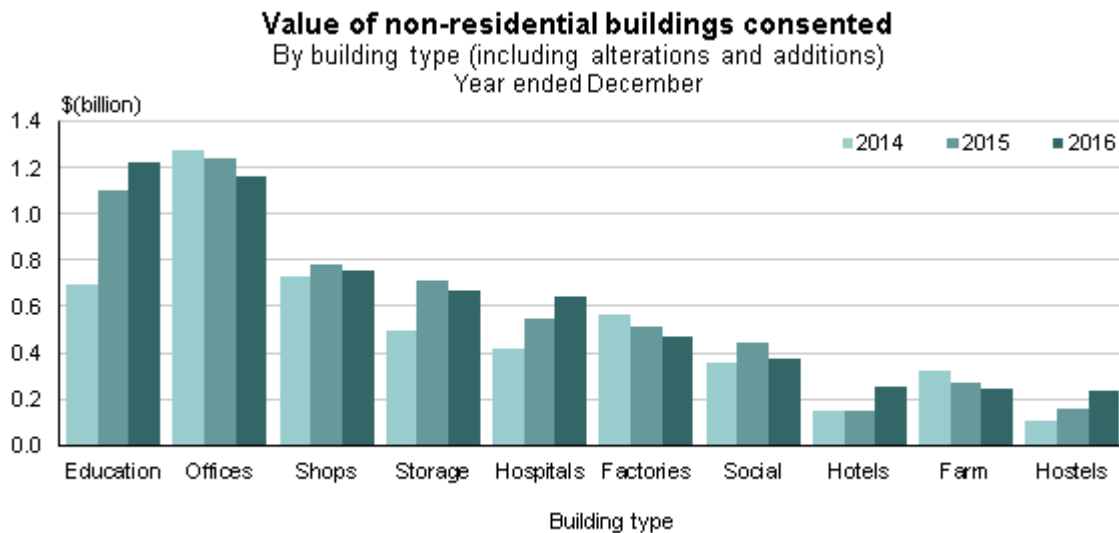
Non-residential value increases slightly in 2016

Non-residential building consents totalled \$6.0 billion in 2016 – up 1.7 percent, following a 16 percent increase in 2015.

However, the total floor area of new non-residential buildings fell 20 percent, mainly driven by storage and farm buildings.

Including alterations, the non-residential building types with the highest values were:

- education buildings – \$1.2 billion (up 11 percent from 2015)
- offices, administration, and public transport buildings – \$1.2 billion (down 6.7 percent)
- shops, restaurants, and bars – \$757 million (down 3.4 percent).



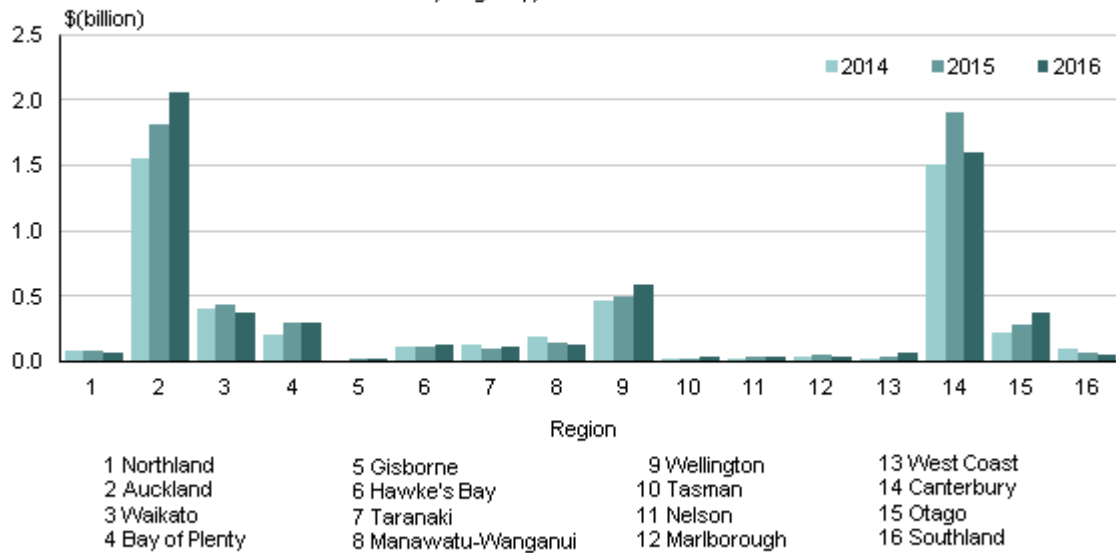
Source: Statistics New Zealand

The regions with the highest value of non-residential building consents were:

- Auckland – \$2.1 billion (up 13 percent from 2015)
- Canterbury – \$1.6 billion (down 16 percent)
- Wellington – \$585 million (up 17 percent).

Value of non-residential building consents

Including alterations and additions
By region, year ended December



Source: Statistics New Zealand

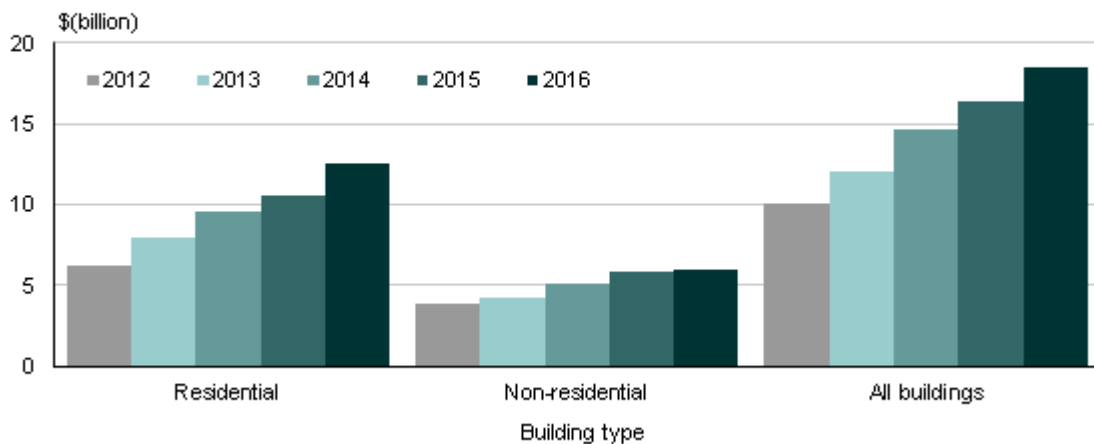
Consents for all buildings total \$18.6 billion in 2016

Consents for all buildings totalled \$18.6 billion in 2016 (up 13 percent from 2015):

- \$12.5 billion for residential buildings (up 19 percent)
- \$6.0 billion for non-residential buildings (up 1.7 percent).

Value of buildings consented

Including alterations and additions
Year ended December



Source: Statistics New Zealand

Kaikoura earthquake

To date, the Kaikoura earthquake of 14 November 2016 has not had an obvious effect on building consent statistics.

Find data tables

For more detailed data, see the Excel tables in the 'Downloads' box.

Related links

- [Next release](#)
- [Past releases](#)
- [Data quality](#)
- [Related information](#)

Next release

Building Consents Issued: January 2017 will be released on 6 March 2017.

[Subscribe to information releases](#), including this one, by completing the online subscription form.

[The release calendar](#) lists all information releases by date of release.

Past releases

[Building Consents Issued](#) has links to past releases.

Data quality

Building Consents Issued – DataInfo+

General methodology used to produce building consent statistics from March 2015 onwards.

Building Consents Issued concepts from March 2015 onwards – DataInfo+

Definitions of terms used in this release.

Principles and protocols for producers of Tier 1 statistics

Statistics in this release have been produced in accordance with the Official Statistics System principles and protocols for producers of Tier 1 statistics for quality. They conform to the Statistics NZ Methodological Standard for Reporting of Data Quality.

Related information

Earthquake-related building consents in Canterbury

Summarises Canterbury consents identified as earthquake-related. This table is updated monthly.

Value of Building Work Put in Place – information releases

Statistics that estimate the actual dollar value of work put in place on construction jobs within New Zealand (quarterly). It includes information by building type, and deflated values.

Copyright and terms of use

Includes our copyright, attribution, and liability statements.

Contacts

For media enquiries contact:

Neil Kelly

Christchurch 03 964 8957

Email: info@stats.govt.nz

For technical information contact:

Mark Darbyshire or Danielle Barwick

Christchurch 03 964 8302 or 03 964 8918

Email: info@stats.govt.nz

For general enquiries contact our Information Centre:

Phone: 0508 525 525 (toll-free in New Zealand)

+64 4 931 4600 (outside New Zealand)

Email: info@stats.govt.nz

Subscription service:

Subscribe to information releases, including this one, by completing the online subscription form.

Correction notifications:

Subscribe to receive an email if a correction notice is published for Building Consents Issued.

Unsubscribe to correction notifications for Building Consents Issued.

Subscribe to all to receive an email if a correction notice is published for any of our information releases.

Unsubscribe to all if you change your mind.

Tables

See the following Excel tables in the 'Downloads' box on this page. If you have problems viewing the files, see [opening files and PDFs](#).

1. Building consents issued
2. Number of new dwellings consented
3. Number and value of new dwellings consented, by region
4. Number of new dwellings consented, trend for selected regions
5. Number of new dwellings consented, by selected territorial authority and Auckland wards
6. Value of building consents issued, actual and trend values
7. Number of new dwellings consented – quarterly
8. Value of building consents issued, quarterly actual and trend values

Machine-readable zipped csv files

Machine-readable zipped csv files are also available. This is a way for technical users to download our data.

Access more data on Infoshare

Infoshare allows you to organise data in the way that best meets your needs. You can view the resulting tables onscreen or download them.

Use Infoshare

For this release, select the following category from the Infoshare homepage:

Subject category: **Industry sectors**

Group: **Building Consents - BLD**

Next release

Building Consents Issued: January 2017 will be released on 6 March 2017.