

## Building Consents Issued: April 2017

Embargoed until 10:45am – 30 May 2017

### Key facts

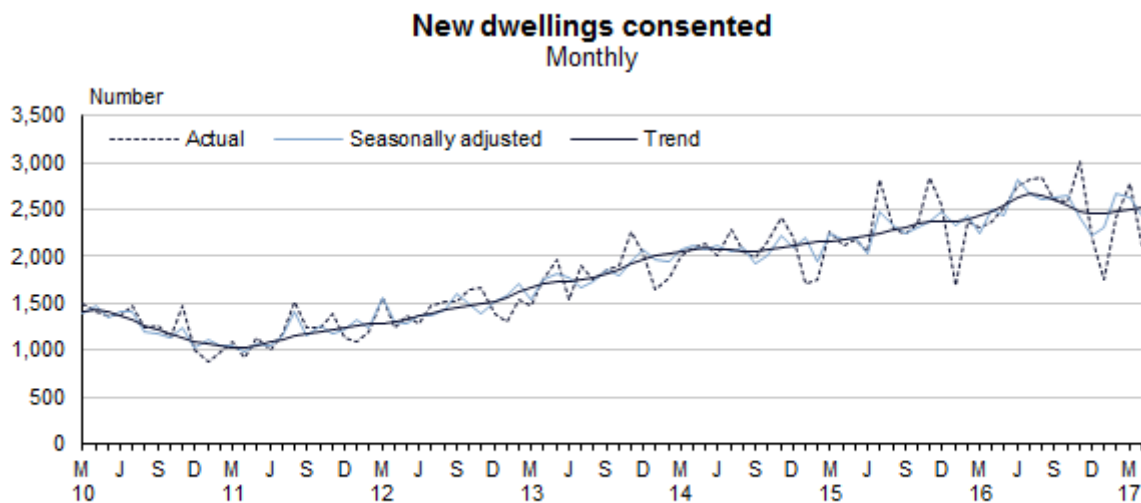
In April 2017, building consents were issued for 2,106 new dwellings:

- 1,487 houses
- 345 townhouses, flats, and units
- 228 apartments
- 46 retirement village units.

The seasonally adjusted number of new dwellings consented fell 7.6 percent, partly due to the timing of Easter.

The trend for the number of new dwellings consented is showing signs of increasing. It reached a 12-year high in mid-2016, but decreased towards the end of the year.

In the year ended April 2017, 30,371 new dwellings were consented – up 8.3 percent from the April 2016 year.



Source: Stats NZ

Including alterations, the value of building work consented in the April 2017 month was \$1.3 billion, comprising \$921 million of residential work and \$411 million of non-residential work.

Liz MacPherson, Government Statistician  
ISSN 1178-0231  
30 May 2017

## Commentary

- [Dwelling consents fall in April driven by Easter](#)
- [Over 30,000 new dwellings consented annually](#)
- [Dwellings trend shows signs of increasing](#)
- [Consents for all buildings total \\$1.3 billion in April](#)
- [Find data tables](#)

Figures given are not adjusted for seasonal fluctuations unless otherwise stated. Values include GST and are not adjusted for inflation.

### Dwelling consents fall in April driven by Easter

The seasonally adjusted number of new dwellings consented fell 7.6 percent in April 2017, following a 1.2 percent fall in March and a 15 percent rise in February. The April fall was driven by the timing of Easter.

For houses only, the seasonally adjusted number fell 0.4 percent, following a 5.3 percent fall in March and a 14 percent rise in February.

In actual terms, 2,106 new dwellings were consented (down 11 percent from April 2016):

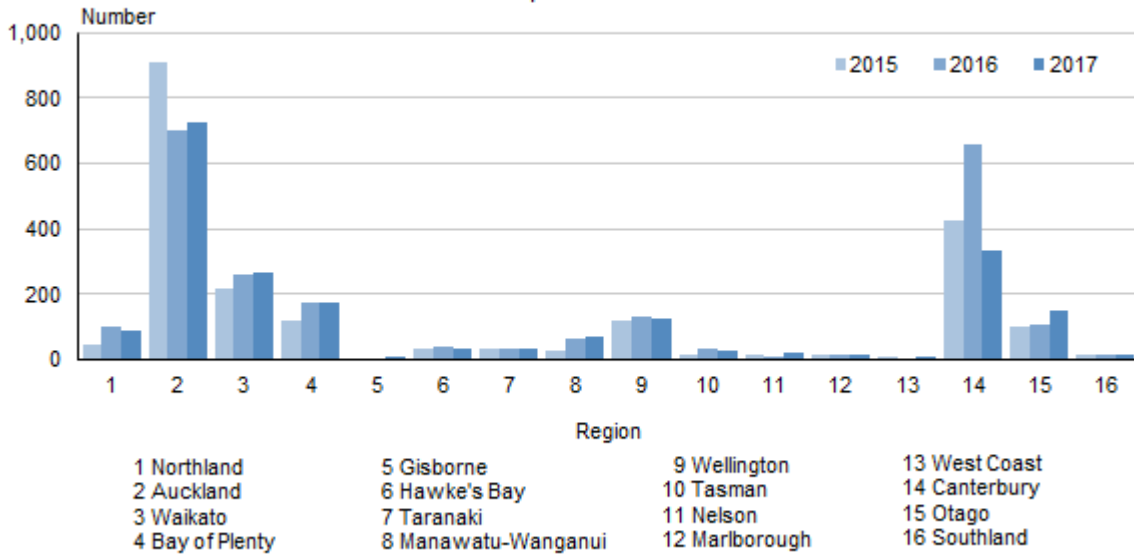
- 1,487 houses
- 345 townhouses, flats, and units
- 228 apartments
- 46 retirement village units.

The regions consenting the most new dwellings were:

- Auckland – 726 (up 3.9 percent from April 2016)
- Canterbury – 333 (down 49 percent, partly due to a spike in retirement village units in April 2016)
- Waikato – 264 (up 1.1 percent).

### New dwellings consented

By region  
April month



Source: Stats NZ

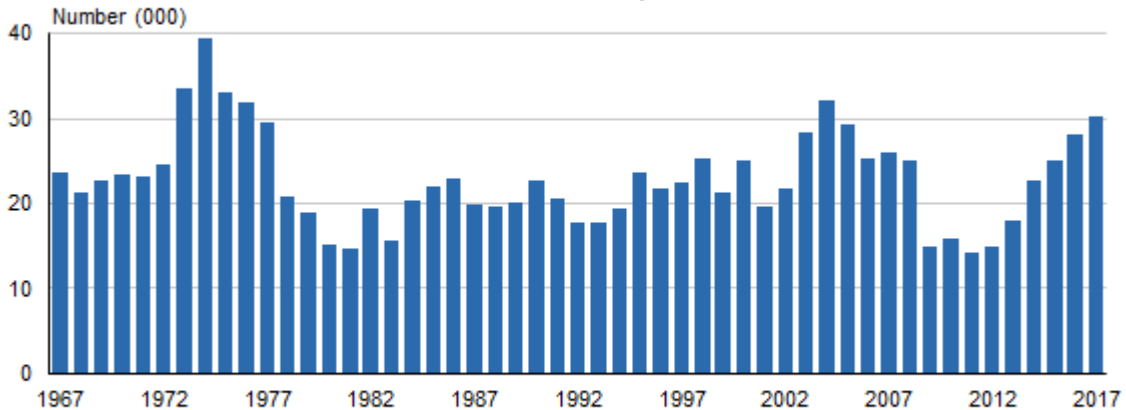
### Over 30,000 new dwellings consented annually

In the year ended April 2017, 30,371 new dwellings were consented – up 8.3 percent from 2016, but still 5.5 percent below the level reached in the April 2004 year and 23 percent below the series peak (for an April year) in 1974.

In the April 2017 year, Auckland consented 10,226 new dwellings – up 9.3 percent from the April 2016 year.

### New dwellings consented

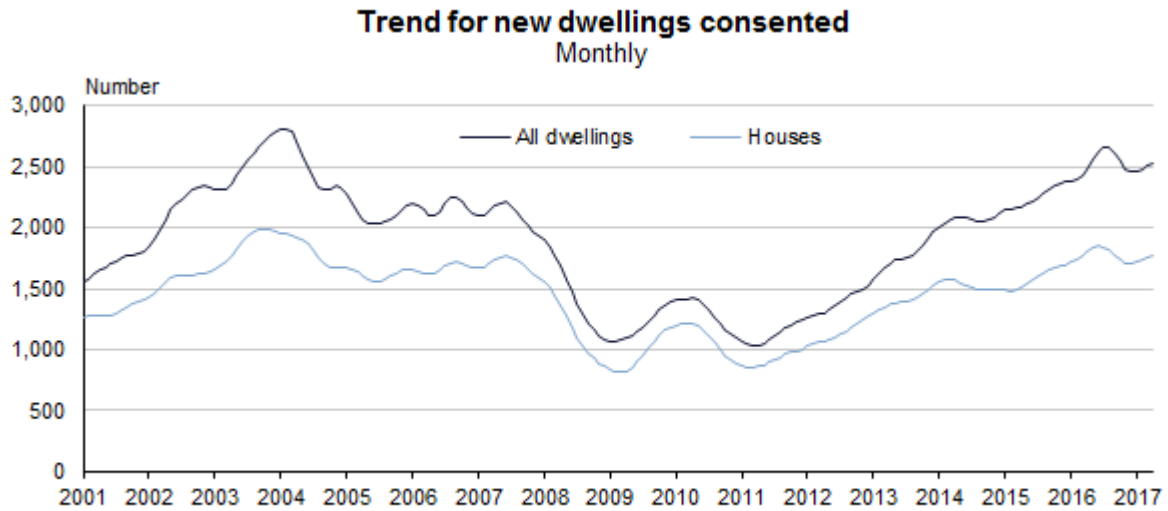
Year ended April



Source: Stats NZ

## Dwellings trend shows signs of increasing

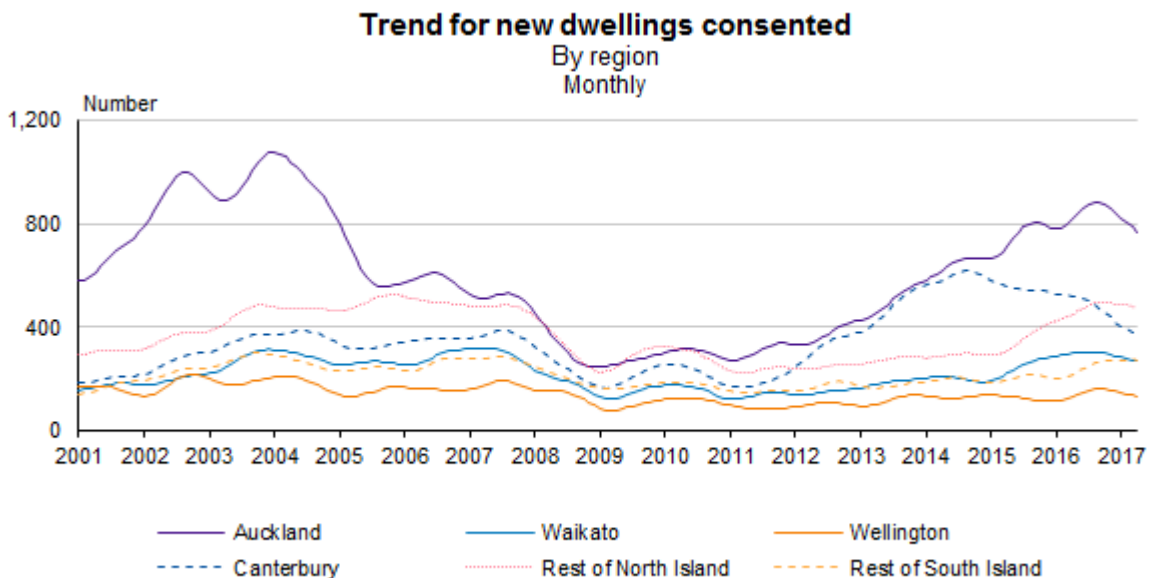
The trend for the number of new dwellings consented is showing signs of increasing. It reached a 12-year high in mid-2016, but decreased towards the end of the year.



Source: Stats NZ

However, increases in the national trend are not yet reflected at a regional level. The volatility of the regional trends means they take longer to reflect underlying changes.

In Canterbury, the trend has fallen 42 percent since the series peak in late 2014 as the post-earthquake residential rebuild winds down.



Source: Stats NZ

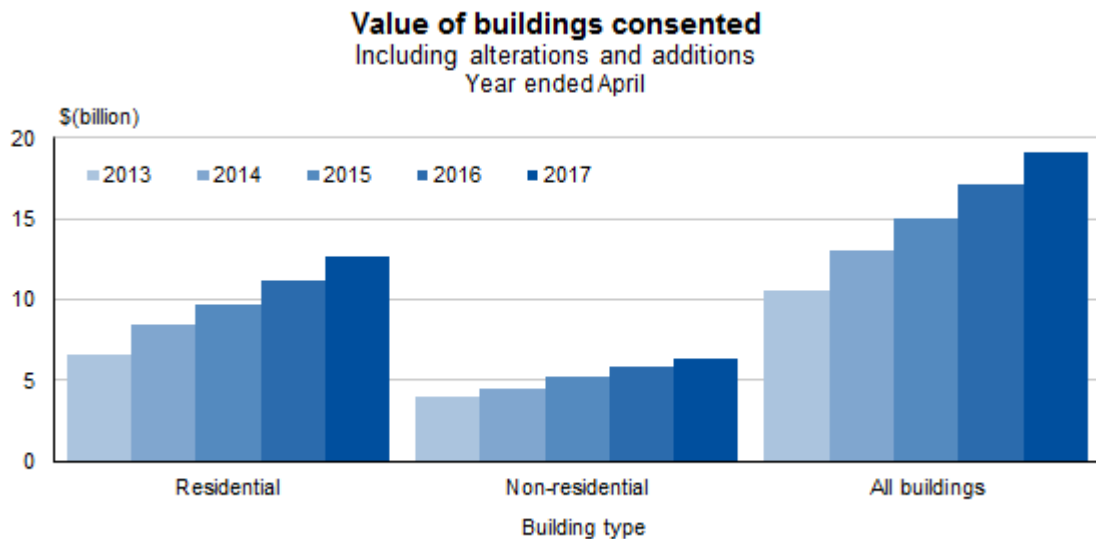
## Consents for all buildings total \$1.3 billion in April

Including alterations, consents for all buildings totalled \$1.3 billion in April 2017:

- \$921 million for residential buildings
- \$411 million for non-residential buildings.

In the year ended April 2017, consents for all buildings totalled \$19.1 billion (up 12 percent from the April 2016 year):

- \$12.7 billion for residential buildings (up 13 percent)
- \$6.4 billion for non-residential buildings (up 9.7 percent).



Source: Stats NZ

## Find data tables

For more detailed data, see the Excel tables in the 'Downloads' box.

## Related links

- [Next release](#)
- [Past releases](#)
- [Data quality](#)
- [Related information](#)

## Next release

*Building Consents Issued: May 2017* will be released on 30 June 2017.

[Subscribe to information releases](#), including this one, by completing the online subscription form.

[The release calendar](#) lists all information releases by date of release.

## Past releases

[Building Consents Issued](#) has links to past releases.

## Data quality

### **Building Consents Issued – DataInfo+**

General methodology used to produce building consent statistics from March 2015 onwards.

### **Building Consents Issued concepts from March 2015 onwards – DataInfo+**

Definitions of terms used in this release.

### **Principles and protocols for producers of Tier 1 statistics**

Statistics in this release have been produced in accordance with the Official Statistics System principles and protocols for producers of Tier 1 statistics for quality. They conform to the Statistics NZ Methodological Standard for Reporting of Data Quality.

## Related information

### **Building plans put to work**

Looks at the relationship between two key Stats NZ construction information releases and what they tell us about building activity in New Zealand.

### **Earthquake-related building consents in Canterbury**

Summarises Canterbury consents identified as earthquake-related. This table is updated monthly.

### **Value of Building Work Put in Place – information releases**

Statistics that estimate the actual dollar value of work put in place on construction jobs within New Zealand (quarterly). It includes information by building type, and deflated values.

### **Copyright and terms of use**

Includes our copyright, attribution, and liability statements.

## Contacts

**For media enquiries contact:**

Neil Kelly

Christchurch 03 964 8957

**Email:** [info@stats.govt.nz](mailto:info@stats.govt.nz)

**For technical information contact:**

Mark Darbyshire or Danielle Barwick

Christchurch 03 964 8302 or 03 964 8918

**Email:** [info@stats.govt.nz](mailto:info@stats.govt.nz)

**For general enquiries contact our Information Centre:**

Phone: 0508 525 525 (toll-free in New Zealand)

+64 4 931 4600 (outside New Zealand)

**Email:** [info@stats.govt.nz](mailto:info@stats.govt.nz)

**Subscription service:**

Subscribe to information releases, including this one, by completing the online subscription form.

**Correction notifications:**

Subscribe to receive an email if a correction notice is published for Building Consents Issued.

Unsubscribe to correction notifications for Building Consents Issued.

Subscribe to all to receive an email if a correction notice is published for any of our information releases.

Unsubscribe to all if you change your mind.

## Tables

See the following Excel tables in the 'Downloads' box on this page. If you have problems viewing the files, see [opening files and PDFs](#).

1. Building consents issued
2. Number of new dwellings consented
3. Number and value of new dwellings consented, by region
4. Number of new dwellings consented, trend for selected regions
5. Number of new dwellings consented, by selected territorial authority and Auckland wards
6. Value of building consents issued, actual and trend values

## Machine-readable zipped csv files

Machine-readable zipped csv files are also available. This is a way for technical users to download our data.

## Access more data on Infoshare

Infoshare allows you to organise data in the way that best meets your needs. You can view the resulting tables onscreen or download them.

### Use Infoshare

For this release, select the following category from the Infoshare homepage:

Subject category: **Industry sectors**

Group: **Building Consents - BLD**

## Next release

*Building Consents Issued: May 2017* will be released on 30 June 2017.